

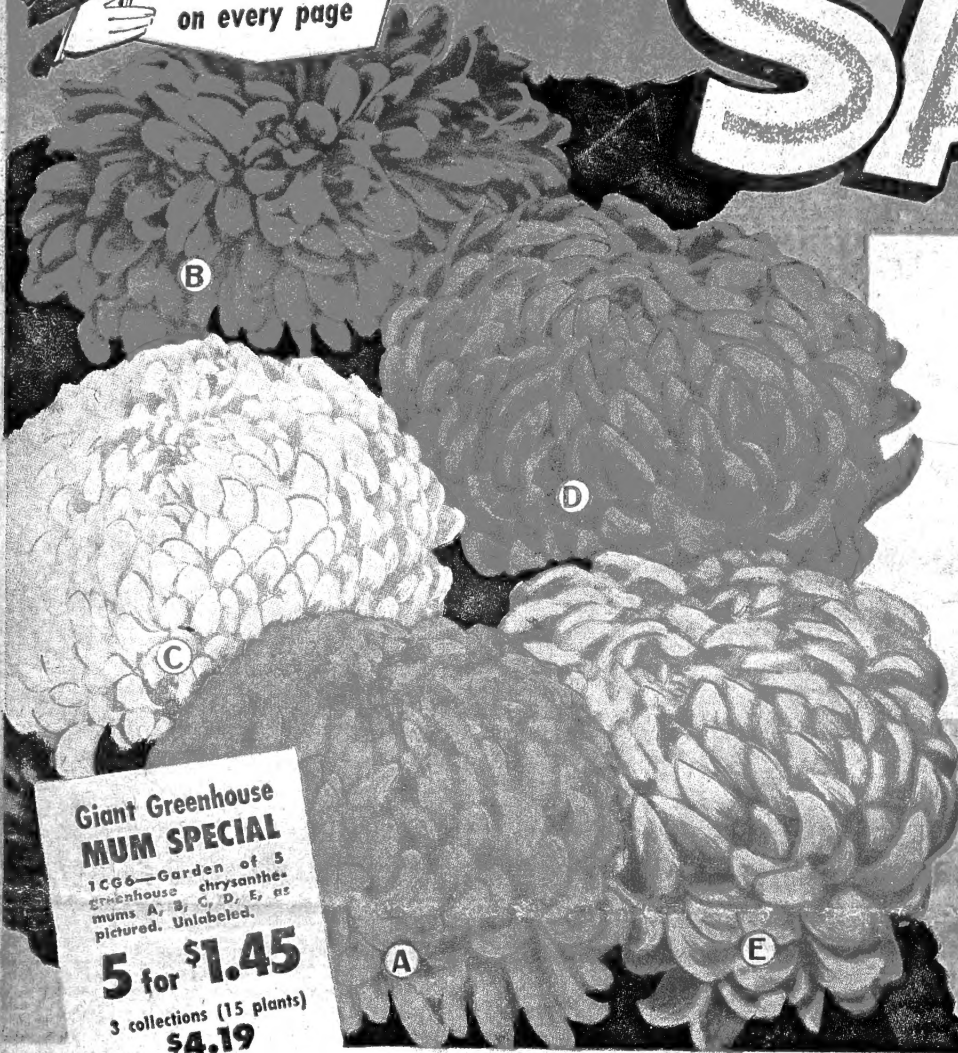
Historic, Archive Document

Do not assume content reflects current scientific knowledge, policies, or practices.

LIBRARY RECEIVED
 1951
 U.S. Department of Agriculture

Spring Hill's 102nd Anniversary

SALE



SEC. 34.66 P. L. & R.
 U. S. POSTAGE
PAID
 PERMIT NO. 3
 TIPP CITY, OHIO

Librarian
 U.S. Dept. of Agriculture
 Washington 25, D.C.

Giant Greenhouse MUM SPECIAL
 1 CG6—Garden of 5 greenhouse chrysanthemum mums A, B, C, D, E, as pictured. Unlabeled.
5 for \$1.45
 3 collections (15 plants) **\$4.19**

GIANT EXHIBITION GREENHOUSE MUMS

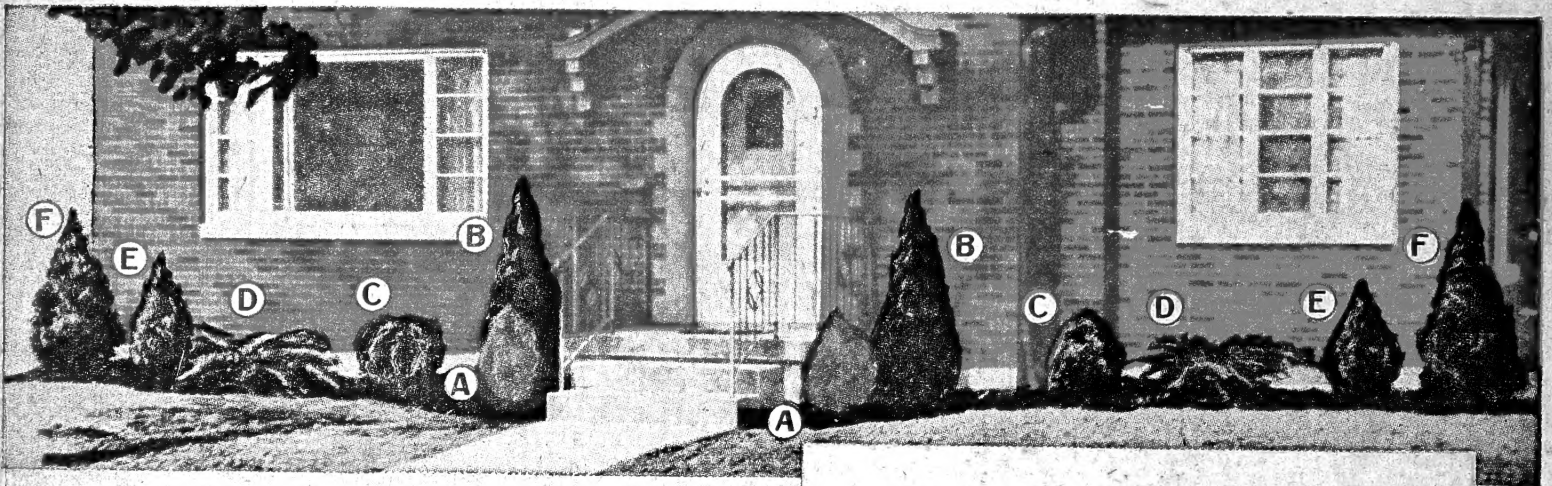
Five of the earliest blooming, giant greenhouse incurved varieties. Easily grown to bloom in your garden this fall. Magnificent saucer-sized blooms when plants are fertilized and grown one bud to a stem. Not hardy in cold climates. Robust, pot plants guaranteed.

- A Mrs. H. E. Kidder—1C1—Highest rated of all yellows.
- B Garner King—1C2—Earliest and best glowing crimson.
- C Silver Sheen—1C3—Highest rated early white.
- D Hilda Bergen—1C4—Huge, deep reddish-bronze.
- E Pink Chiff—1C5—Earliest, large, glowing pink.

Your choice of above giant greenhouse varieties as pictured.

35c each . . . 3 for 98c

SALE ENDS JUNE 1st, 1951 **FREE GIFT!** See details Back Cover.



SAVE AT AMERICA'S LARGEST NURSERY SALES SHED

SHOP IN COMFORT

FRONT YARD PLANTING

12 Giant Evergreens as pictured

1E7—Amazing savings! 12 big landscape size evergreens as pictured at 25% savings. Guaranteed big, heavy plants as pictured. See notice and description of varieties, page 8. Dug bareroot at the nursery for shipping to save delivery costs. Complete 1st class planting, F.O.B., Tipp City, Ohio.

A—2 Dwarf Golden Blota, 2 ft. . . .	\$9.00	All 12 for only
B—2 Pyramid Arbor Vitae, 3 ft. . . .	9.95	
C—2 Globe Arbor Vitae, 2 ft. . . .	7.95	
D—2 Juniper Pfitzeriana, 2 ft. . . .	9.95	
E—2 Spiny Greek Juniper, 2 ft. . . .	8.00	
F—2 American Arbor Vitae, 3 ft. . . .	8.50	
Regular catalog value		\$33.35

Guaranteed Plants • Buy with Confidence

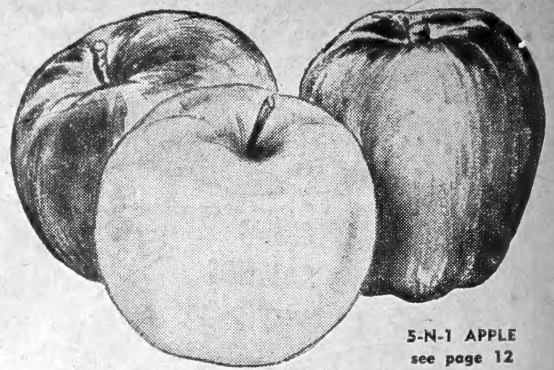


SPRING HILL NURSERIES, Tipp City, Ohio
 RELIABLE HORTICULTURE SPECIALISTS and CONSULTANTS FOR 102 YEARS.

QUICK BEARING APPLE TREES

Listed in approximate order of ripening

YELLOW TRANSPARENT—2A1—First to ripen. Dependable, high yielding early variety. Large golden.
NEW LODI—2A2—Extra early, large golden apple, surpassing Yellow Transparent for cooking and eating.
WEALTHY—2A3—Early summer apple. Big yields, high quality, red striped fruit for cooking, eating, cider.
RAMBO—2A4—Well known favorite for good flavor. No other apple is prized so much for eating and desserts.
MCINTOSH—2A5—Follows Wealthy for season. A bright red tangy apple unsurpassed for eating and cooking.
DOLGA CRAB—2A6—Noted for cross pollination and beautiful big, scarlet fruits, makes jams, jellies, etc.
JONATHAN—2A7—High quality, crisp, bright red fruits. Quality, quantity unsurpassed for eating, cooking.
GRIMES GOLDEN—2A8—Our leading yellow apple. Dependable and tasty, great favorite, cooking, eating.
DBL. RED DELICIOUS—2A9—Famous for color, mellowness, flavor, cooking, eating and big crops.
YELLOW DELICIOUS—2A10—Same shape, size and quality of regular delicious, excels in quality, yields.
STAYMEN WINESAP—2A11—A champion for size, quality, productiveness. Leading cooking, eating apple.
BALDWIN—2A12—Old favorite with rich, juicy, red apples that keep into the winter. Reliable, profitable.
GIANT RED WINESAP—2A13—Brilliant red strain. Similar in size, shape, yields to Staymen Winesap.
RED ROME BEAUTY—2A14—Late keeping, cooking apple. Unsurpassed for yield. Commands high prices.



5-N-1 APPLE
see page 12

REDUCED APPLE TREE PRICES

Guaranteed U. S. Standard Grades
All varieties alike or assorted.

Description & Cat. No. see above Age, size and trunk diameter	Price Each	Price of 2 trees	Price of 5 trees	Price of 10 trees
GOOD, 2 yr., 3-4 ft., 7/16 to 9/16 in.	.75	1.40	3.35	6.50
BETTER, 2 yr., 4-5 ft., 9/16 to 11/16 in.	1.19	2.30	5.60	11.00
BEST, 3 yr. 6-7 ft., 11/16 in. up, Quick crop.	1.95	3.80	9.35	18.50

ANOKA APPLE—Quick Bearing

2A15—(A Noteworthy Apple) Created by one of America's master plantmen. Often bears fruit first year. Hardy in all climates, one of the very best summer apples. Red striped fruits for eating and cooking. 2 yr. bearing age, 3 to 4 ft., \$1.15 each; 3 for \$2.98. 5 to 6 ft., bearing age, \$1.75 each; 3 for \$4.95.



DWARF APPLE
see page 3

Enjoy

HOME GROWN FRUIT

For Good Health: Good Eating: Savings

GUARANTEED
BLUE
RIBBON
QUALITY

ALL season HOME ORCHARD—2A16

Fresh apples nearly every day in the year. You get 5 apple trees plus one pear tree. 1 YELLOW TRANSPARENT, 1 GRIMES GOLDEN, 1 DOUBLE RED WINESAP, 1 WEALTHY, 1 DOUBLE RED DELICIOUS—3-4 ft. size, 5 apple trees plus 1 pear tree, \$3.25—6-7 ft. size, 5 apple trees plus 1 pear tree, \$9.25.

FREE
PEAR TREE

C H E R R I E S

— AMERICA'S FAVORITE Varieties

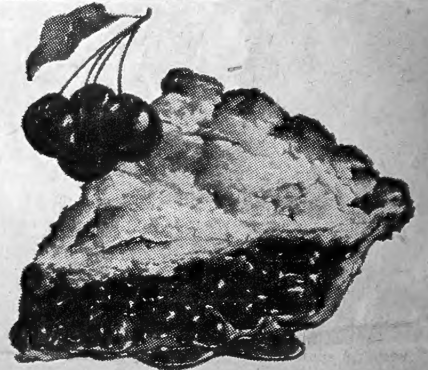
EARLY RICHMOND (Sour Cherry) 2C19—1st to ripen. Medium size red fruit unsurpassed for pies. Bears big crops young.
LARGE MONTMORENCY (Sour Cherry) 2C20—Nation wide recognized as most dependable cherry for home and commercial use. Plant Spring Hill's improved strain.
BLACK TARTARIAN (Sweet Cherry) 2C21—Famous ox-hearts. Almost black fruits sweet flavor.
ROYAL ANN (Sweet Cherry) 2C22—Extra large, firm, sweet and juicy yellow cherries.

Prices of CHERRY TREES

State size, name and catalog number, Alike or Assorted

Description see above Size and trunk diameter	Price Each	Price of 2 trees	Price of 5 trees	Price of 10 trees
3 ft., 7/16 to 9/16 in.	1.00	1.90	4.60	8.95
3 1/2 to 5 ft., 9/16 to 11/16 in.	1.79	3.50	8.60	17.00
5 to 6 ft., 11/16 in. up, quick crop.	2.25	4.40	10.85	21.50

NEW RICHMORENCY CHERRY—2C24—(U.S. Plant Patent No. 316) A large fruiting, extra early ripening Montmorency. A good money maker because of the immense size, high quality, vigorous growing, hardy trees and the fact it ripens ahead of regular Montmorency. 2 yr. giants 5 to 7 ft. size, \$2.50 each; 3 for \$7.20. 3 to 4 ft. size, \$1.75 each; 3 for \$4.95.



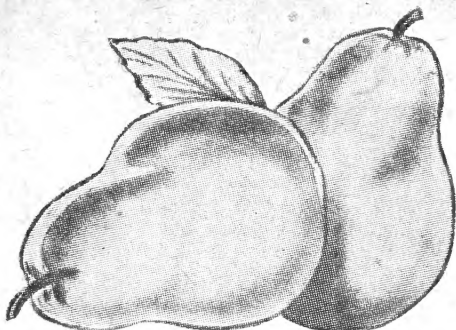
DWARF BUSH CHERRY

No. 2C23

Prof. Hansen's quick bearing, big plum-shaped fruit. 4 year, bearing age, 3 to 4 ft. tall, \$1.00 each; 3 for \$2.50. 2 yr., 1 1/2 ft. tall, 55¢ each; 3 for \$1.50; 10 for \$4.50.

SPRING HILL'S QUALITY PEARS

LISTED IN ORDER OF RIPENING



SECKEL—2P25—Favorite sugar pear prized for desserts, pickling and rich flavor for eating.
DUCHESS—2P26—Extra large, sweet, mellow fruit ripens in September. Healthy, heavy bearing trees.
BARTLETT—2P27—National popularity. Mild sweet delicious attractive golden fruit red blush.
MAXINE—2P28—Big, deliciously mellow, fine grained, high quality fruit. High yields. Recommended.
KIEFFER—2P29—Winter pear. Store to ripen for quality, eating and canning.

PEAR TREE PRICES

State size, name and catalog number Choice of 5 varieties

Catalog No. Description Above Size and Trunk Diameter	Price Each	Price of 2 trees	Price of 5 trees	Price of 10 trees
4 to 5 ft. 9/16 to 11/16 in.	1.19	2.30	5.60	11.00
6 to 7 ft., quick crop, 7/8 to 1 in.	1.85	3.60	8.85	17.50

BIG BARTLETT PEARS on DWARF TREES

2P30—Dwarf Bartlett Pear. Full size fruit on beautiful miniature trees. Will bear first or second year, special dwarfing root stock make trees blight resistant. Ideal for city lot planting. **Reduced price. Large, 3 yr., 3 to 4 ft. tall, \$2.85 each; 2 for \$5.50; 6 for \$15.90.**

PEACH TREE SPECIAL

One year June buds grown by the million for commercial growers. Here's your opportunity to purchase excellent peach trees at planters' prices. Only best 5 varieties available. Guaranteed to bear fruit quickly. Belle of Georgia, 2P45; Elberta, 2P46; Hale Haven, 2P47; Golden Jubilee, 2P48; New Red Haven, 2P49. Descriptions see opposite. Choice of above 5 varieties, 1 1/2 to 2 ft. size, (25 or more trees at 100 rate). 3 for 89¢; 6 for \$1.65; 12 for \$2.95; 100 for \$22.50.

BURBANK—2P31—Big, bright red plum fruit of excellent quality, profitable crops.
YELLOW EGG—2P32—Rich golden plums with delicious sugar flavor. Fruit extra large.
GIANT PRUNE—2P33—Big, dark blue freestone, sweet, mellow, yellow flesh.
STANLEY PRUNE—2P34—Best large, purple freestone plum unsurpassed quality, size.
IMPROVED SHROPSHIRE DAMSON—2P35—Heavy fruiting bright blue freestone strain.
GIANT RED PRUNE—2P36—Extra large and sweet. Mammoth size, superb quality.

REDUCED PLUM TREE PRICES

Choice of above 6 varieties

Description and Cat. No. see above Size, Trunk Diameter	Price Each	Price of 3 trees	Price of 6 trees
3 to 4 ft., 2 yr.	1.25	3.45	6.60
5 to 7 ft., 3 yr., 11/16" up.	2.00	5.70	11.10

America's
Finest Hardy
PLUMS



Delicious HARDY PEACHES

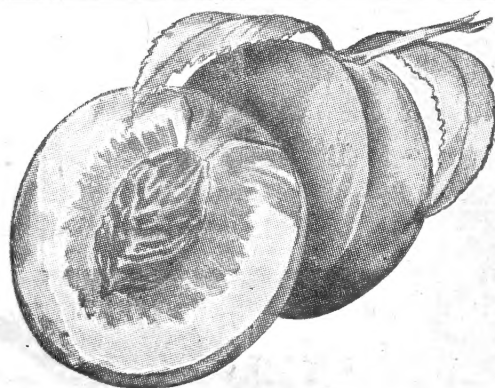
LISTED IN ORDER OF RIPENING

GOLDEN JUBILEE—2P37—Favorite, early yellow freestone peach of exceptionally good quality, color and flavor.
NEW RED HAVEN—2P38—Ripens a month ahead of Elberta. Brilliant red color, fine, sweet, juicy flavor, freestone.
EARLY ELBERTA—2P39—Like Elberta but bears two weeks earlier. Dependable, large, golden-yellow freestone.
HALE HAVEN—2P40—Best, new hybrid peach in U. S. A. for home or orchard. Delicious big, yellow freestone.
BELLE OF GEORGIA—2P41—Big, red blushed freestone fruits with creamy-white flesh. Strong growing, hardy.
J. H. HALE—2P42—Earlier than Elberta, superior color, size and flavor. Extra large golden, yellow freestone.
ELBERTA—2P43—Large, juicy golden freestone. The old reliable favorite and popular money making variety.
LATE ELBERTA—2P44—Extend peach season with this leading late peach; 2 to 3 weeks later than Elberta.

New Low PEACH TREE PRICES

Choice of above 8 varieties of peach trees
Guaranteed U. S. Standard Grades

Description and Cat. No. see above Age, size and trunk diameter	Price Each	Price of 2 trees	Price of 5 trees	Price of 10 trees
GOOD, 3-4 ft., 7/16 to 9/16 in.	.69	1.30	3.10	5.95
BETTER, 4-5 ft., 9/16 to 11/16 in.	1.15	2.20	5.35	10.50
BEST, 5-6 ft., 11/16 in. & up, Quick crop Giants	1.75	3.40	8.35	16.50



IMPORTANT INFORMATION FOR CUSTOMERS WHEN ORDERING

ORDERS ACKNOWLEDGED

We acknowledge all orders.

We return your original order with package for checking. **KEEP YOUR ORDER. IN EVENT OF ANY ERROR, CLAIM OR ADJUSTMENT,** it will be necessary for you to return your original order with your letter. If your order is not filled completely, you will be advised whether or not balance will follow later or amount of any shortage refunded to you.

WAR STAMPS ACCEPTED AS PAYMENT FOR YOUR ORDERS

HOW TO ORDER

Use order-blanks enclosed. List the variety of plants you want, state catalog number, size and price. Advise **DATE** you wish your order shipped.

TERMS AND REMITTANCE

All orders should be accompanied with remittance. Please mail Post Office Money Order, Express Money Order or Personal check. Spring Hill cannot be responsible for currency, stamps, war stamps or cash (wrap coins securely) unless sent by registered mail.

NO C.O.D. ORDERS ACCEPTED

MAIL YOUR ORDER TODAY

IT'S EASY, SAFE AND ECONOMICAL. Our high grade plants at comparative prices represent some of the greatest values ever offered. Come, see for yourself or mail your order. Over 1,000,000 plants produced annually.



Inside view, America's largest nursery sales shed.



Hundreds of visitors each spring; you are always welcome

NO AGENTS OR SALESMEN

When dealing direct you get full benefit of our guarantee.

IMPORTANT . . . PLEASE ADD POSTAGE.

(Transportation Notice) — When nursery stock or plants are to be shipped by parcel post, please add 10% for packing and postage. This enables us to give our customers the lowest possible selling price for big, first class plants. If you do not include postage charges, your order will be shipped express collect or we will bill you for the parcel post. All trees over 5 ft. tall will be shipped via express. Ohio customers please add 3% sales tax.

VISIT THE NURSERY

See our growing farms of over 500 acres and the big sales shed full of values this spring. Many **PRICE REDUCTIONS.**



W. F. Bohlender son and gen. mgr. 1912 to 1936
H. N. Kyle son-in-law, sec'y-treas. 1909 to 1928



Peter Bohlender founder 1849

Continually Operated By One Family 102 Years



TOM KYLE Pres., Gen. Mgr.



HOWARD KYLE Vice Pres., Secy.

Dear Friends:

It is the ambition of our organization to improve quality and keep low prices. We invite your inspection of our growing fields here at Tipp City where most of the nursery stock is grown which we sell.

We desire to conduct all transactions to your satisfaction. Advise when anything is not right. We make mistakes, however, errors and unsatisfactory plants cannot be corrected unless we hear from you.

To our many old and new friends we wish to express our appreciation for their encouragement, confidence and patronage. Thank you for thinking of us.

Tom and Howard Kyle

P. S. We are well known in Tipp City. The Postmaster, Chamber of Commerce, etc. will vouch for us. For bank reference write to Tipp Citizens National Bank, Tipp City, Ohio and Winter's National Bank, Dayton, Ohio.

Buy Direct SUPERIOR QUALITY BIG SAVINGS . . .

UNSOLICITED TESTIMONIALS

Lincoln, Nebraska
Gentlemen:
The trees came through fine and are doing nicely. Many thanks.
B. H. Cottrell

Cleveland 13, Ohio
Dear Sir:
Received the 12 evergreens in A-1 shape. Everything looks nice and healthy. Thanks a lot. The plants are beautiful planted.
Mrs. M. Wright

Somerset, Penna.
Dear Sir:
I was so very much pleased with everything you sent me. Your bulbs were especially nice for the price.
Mrs. Robert E. Emert

Muncie, Indiana
Dear Sirs:
Received my order yesterday in fine shape. Surely a nice lot of green topped plants.
Mrs. Joseph E. Heaton

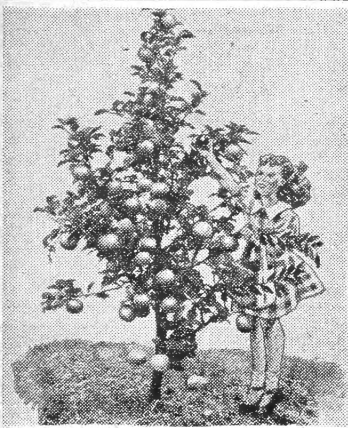
Adrian, Michigan
Dear Sirs:
Received peony roots in good condition. Thank you so much.
Mrs. Floyd Powers

Roseburg, Oregon
Gentlemen:
Was very much pleased with the nursery stock and thank you for sending such lovely plants.
Mrs. Robert T. Rutledge

OUR GUARANTEE TO YOU

We guarantee high quality stock, exactly as represented, government inspected, true to name and to arrive safely in healthy, live growing condition. Any plants that reach you otherwise will be replaced free. **REPLACEMENTS—We guarantee our plants to grow, bloom and produce if given intelligent handling, proper planting and reasonable care. Weather conditions, carelessness, and lack of experience by the planter are conditions beyond our control; regardless of this, Spring Hill will replace any plants that fail to grow at half the original purchase price if notice is made One Month after delivery of your order. Please enter complaints immediately. It is mutually agreed that our liability cannot be greater than your original purchase price. GUARANTEED SATISFACTION.**

RAISE YOUR HOPES — WITH SPRING HILL'S QUALITY PLANTS



Big Apples on Dwarf Trees

Full size fruit on beautiful miniature trees. Will bear fruit 1st or 2nd year. Special imported Malling dwarfing root stock. Height at maturity 6 to 10 ft. In England, where most all apples are grafted on Malling stocks, they claim the fruit is of much finer flavor. Be sure to plant bud union 2 to 4 inches above ground. Choice of three popular varieties.

3A1—Yellow Transparent, Early yellow.
3A2—Dbl. Red Delicious, Late red.
3A3—McIntosh, Mid-season red.
Choice of 3 varieties listed, 3 yr., 4 ft. size
\$3.50 each; 5 for \$16.50.

Dwarf Apple Tree Special

3A4—One each Yellow Transparent, 1 Dbl. Red Delicious and 1 McIntosh, big, 3 yr., 4 ft. size.

All 3 for \$9.98

Sure Crop NECTARINES

3P5—Unusual, delicious, sweet fruits with thin, smooth skin like a plum. Mellow, rich, juicy, flesh like peaches. Unequaled for eating fresh or canned. Trees and fruit resemble peaches and can be grown where peach trees grow. Trees bear young—usually 2nd year. **2 to 3 ft. \$1.00 each; 2 for \$1.90; 6 for \$5.40. 5 to 7 ft., \$1.75 each; 2 for \$3.40; 6 for \$9.90.**

All Season Family PEACH ORCHARD

3P6—Spring Hill's branched 2 to 3 ft. trees used in this collection usually bear fruit second year. This is an outstanding offer. One each of the following. No broken collections. See descriptions Page 4.

1 Red Haven, 1 Belle of Georgia, 1 Late Elberta, 1 Hale Haven, 1 Golden Jubilee, 1 Elberta.
6 for 2.70
Catalog Value \$3.30

High Yielding APRICOTS

MOORPARK

3A7—Extra large freestone, golden-orange fruit; sweet and juicy. Recommended.

SUPERB

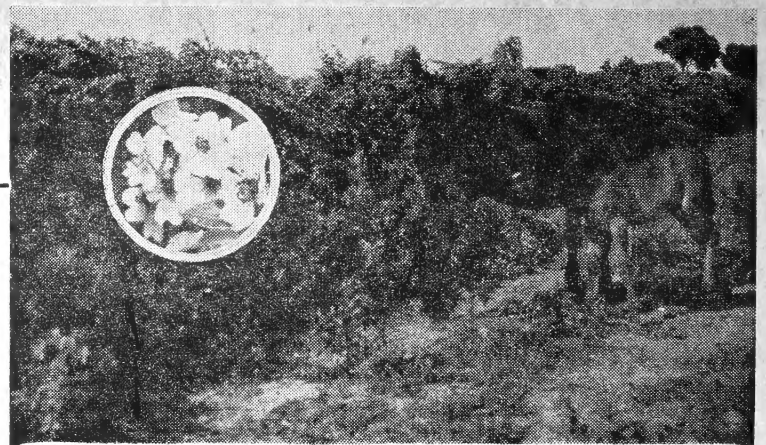
3A8—Unsurpassed for canning, eating, drying; delicious, medium-size, freestone.

NEW LOW APRICOT PRICES

2 yr., 2 to 3 ft., 5/16 to 9/16 in. .89 each, 2 for 1.70, 6 for 4.70.
2 yr., 4 to 5 ft., 9/16 to 11/16 in., 1.45 each, 2 for 2.80, 6 for 7.95.
3 yr., 5 to 7 ft. giants, 1.98 each, 2 for 3.85, 6 for 11.10.

GIANT ORANGE QUINCE

3Q9—Most popular large quince. Famous for size, rich golden-orange colors, productivity, aroma and most excellent quality. The best variety for cooking because it gets tender and has an excellent flavor. Trees bear young, 2 yr., 4 to 5 ft. size, \$1.85 each; 3 for \$5.25; 10 for \$16.90.



ROSA MULTIFLORA THE MIRACLE ASIATIC SHRUB

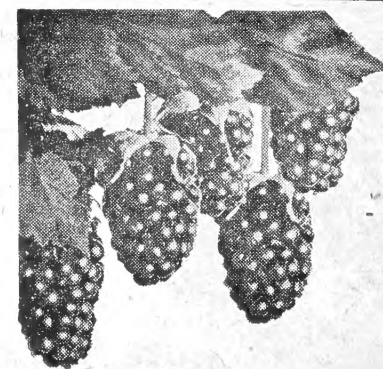
A PRACTICAL, LIVING FARM FENCE

(Rose Multiflora)—3H20—A practical living farm fence. Rose Multiflora is recognized by U. S. Soil Conservation Service as a practical farm fence. Present recommendations are to plant 1 ft. apart in a single row. Above picture shows mature hedge. Plants are hardy and well adapted to most all soils and climates. Fine for game protection and the attractive plants are filled each fall with beautiful seed pods that are fine for game food. The general use of Rose Multiflora is just beginning but records prove its value for conservation and an inexpensive farm fence that will last for generations.

Big demand, limited supply. We suggest early orders.

NEW LOW PRICES

6-12 Inch	12-18 Inch	18-24 Inch
10-\$.65	10-\$.85	10-\$ 1.25
25-\$ 1.25	25-\$ 1.75	25-\$ 2.75
100-\$ 3.95	100-\$ 6.00	100-\$10.00
1000-\$30.00	1000-\$50.00	1000-\$90.00



Giant Thornless BOYSENBERRIES

Giant Thornless Boysenberry

3B14—The biggest berry ever developed. Large, fancy fruit often 1 1/2 inches long of beautiful maroon color and superb quality. Excellent for eating, canning, freezing, juices, etc. No. 1 plants, 3 for 85c; 6 for \$1.40; 12 for \$2.45; 25 for \$3.95; 100 for \$14.75.

Quick Crop Thornless Boysenberry

3B15—Large size, better rooted. 2 for 80c; 4 for \$1.45; 10 for \$3.25; 25 for \$7.50.

Grow Your Own SMALL FRUITS

MORE HEALTHFUL — MORE ECONOMICAL — FROM YOUR OWN GARDEN

America's Best STRAWBERRIES

Recommended varieties for every home and commercial planting. All certified 1st quality and grade.

Reduced commercial prices.

EVERBEARING SUPERFECTION 451—Finest new ever-bearing strawberry hybrid cross in years. Spring Hill is again reducing prices. Big, strong plants begin bearing a few weeks after planting and will continue fruiting till winter. Large, bright red, high quality, deliciously flavored fruits. Self-pollenizing. 25 for \$1.75; 50 for \$2.65; 100 for \$5.25; 200 for \$8.95; 500 for \$19.00; 1,000 for \$33.00.

EVERBEARING GEM 452—Will bear fruit for you this summer and fall. Dependable and leading everbearing variety for home, commercial plantings. Enormous yields. High quality; good size and color. Reduced prices. 25 for \$1.25; 50 for \$1.98; 100 for \$3.50; 200 for \$5.95; 500 for \$12.75; 1,000 for \$22.50.

EVERBEARING STREAMLINER 453—Delicious, radiant-red fruit this summer and fall. Excellent for canning and freezing because it is naturally so sweet. Self-pollenizing. Reduced prices. 25 for \$1.50; 50 for \$2.35; 100 for \$4.50; 200 for \$7.50; 500 for \$15.00; 1,000 for \$27.50.

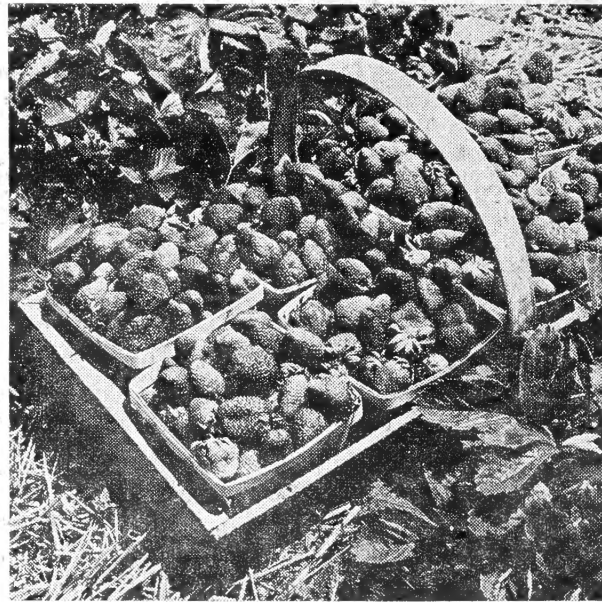
RED RICH (Patent applied for) 454—THE GREAT NEW EVERBEARER—New hybrid cross of Wayzata and Fairfax which has promise of becoming America's leading strawberry. Highly praised by commercial growers for its luscious quality, tremendous yields and big healthy plants. The deliciously sweet, dark red berries are of immense size. There is no question Red-Rich is far superior to anything new on the market. Plant now; enjoy abundance of fruit this summer. America's lowest prices. 25 for \$3.98; 50 for \$7.50; 100 for \$13.90.

EVERBEARING SPECIAL 4555

50 Gem \$1.98
25 Streamliner 1.50
25 Superfection 1.75

Catalog value \$5.23

100 for \$3.98



BEST EVERBEARING SPECIAL 4556

25 Streamliner \$1.50

25 Superfection 1.75

Cat. value \$3.25

25 each (labeled) all

50 plants for only \$2.45

Spring Hill's Family Patch Special 4557

25 Superfection \$1.75

25 Giant Gem 1.25

25 Premier .95

25 Temple .95

25 Sen. Dunlap .75

25 Scar. Beauty 1.00

Cat. value \$6.65

25 plants each (labeled)

All 150 for only \$3.95.

Early, Mid-Season and Late Spring Bearing Strawberry Special 4558

25 Premier \$.95

25 Sparkle 1.00

25 Red Star 1.15

Cat. value \$3.10

25 plants each (labeled)

All 75 for only \$2.25.

Finest Spring Bearing Strawberries

At Reduced Commercial Prices

SPARKLE—4510—New, outstanding, mid-season ripening red-stem immune variety. Big crops of dark, glossy-red fruits. Excellent for freezing. Self-pollenizing; vigorous growing. Reduced prices. 25 for \$1.00; 50 for \$1.50; 100 for \$2.50; 200 for \$4.50; 500 for \$8.95; 1,000 for \$16.00.

SCARLET BEAUTY (Robinson)—4511—Large fruiting, highly productive; excellent growing self-pollenizing variety. Big red berries are large as golf balls. Unsurpassed for eating, canning and freezing. 25 for \$1.00; 50 for \$1.65; 100 for \$2.75; 200 for \$4.80; 500 for \$8.95; 1,000 for \$15.00.

RED STAR—4512—Considered the best late ripening strawberry. Big crops of large, high quality, sparkling-red fruits. Extend your strawberry season. 25 for \$1.15; 50 for \$1.75; 10 for \$2.75; 20 for \$4.75; 500 for \$9.50; 1,000 for \$17.50.

SENATOR DUNLAP—4513—A most popular variety. Spring Hill's true strain bears enormous crops of large, sweet, high quality berries. 25 for 75c; 50 for \$1.25; 100 for \$1.69; 200 for \$3.20; 50 for \$6.85; 1,000 for \$11.75.

TEMPLE 4514—U. S. D. A. red stem immune variety. Large firm sweet-flavored fruits in greatest abundance. Highly recommended for home and commercial plantings. New reduced prices. 25 for 95c; 50 for \$1.40; 100 for \$2.35; 500 for \$8.45; 1,000 for \$13.50.

FAIRLAND—4515—Another new U. S. D. A. red stem resistant introduction with outstanding crop records. Alert growers should not fail to test this great new high yielding, large size, quality variety. 25 for \$1.00; 50 for \$1.50; 100 for \$2.50; 200 for \$4.50; 500 for \$8.95; 1,000 for \$16.00.

PREMIER—4516—Extra early ripening. Frost resistant, heavy yielding variety. The most profitable variety for many years. Self-pollenizing. Reduced prices 25 for 95c; 50 for \$1.40; 100 for \$2.35; 200 for \$4.95; 500 for \$8.45; 1,000 for \$13.50.

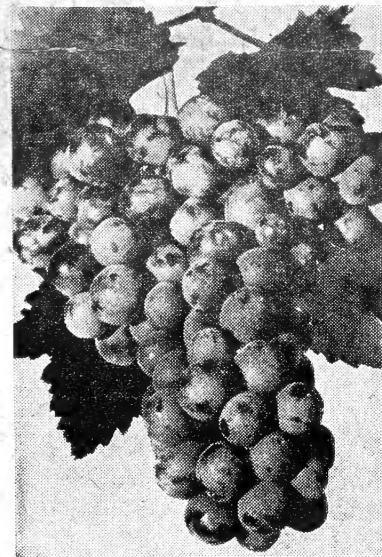
ALL SEASON GARDEN SPECIAL 4559

25 Giant Gem \$1.25
25 Superfection 1.75
25 Senator Dunlap75
25 Premier95

Catalog value \$4.70

25 plants each (labeled)

All 100 for only \$2.75



GRAPES

VAN BUREN 4G17—Best extra early black grape. 2 yr., 70c each; 3 for \$1.95. 3 yr., 90c each; 3 for \$2.50.

NIAGARA 4G18—Most reliable white grape. 2 yr., 42c each; 3 for \$1.10. 3 yr., 55c each; 3 for \$1.45.

CACO 4G19—Honey-sweet, big red grapes. 2 yr., 50c each; 3 for \$1.35. 3 yr., 65c each; 3 for \$1.75.

FREDONIA 4G20—Extra large, early blue grape. 2 yr., 45c each; 3 for \$1.15; 3 yr., 55c each; 3 for \$1.45.

GOLDEN MUSCAT 4G21—Big California Native Grape hybrid. 2 yr., 70c each; 3 for \$1.95. 3 yr., 90c each; 3 for \$2.50.

DELAWARE 4G22—Delicious pink with superb flavor. 2 yr., 50c each; 3 for \$1.35. 3 yr., 65c each; 3 for \$1.75.

SENECA 4G23—New golden hardy hybrid California grape. 2 yr., 90c each; 3 for \$2.50. 3 yr., \$1.25 each; 3 for \$3.50.

SEEDLESS CONCORD 4G24—Similar to Concord with smaller bunches and berries. 2 yr., 90c each; 3 for \$2.50. 3 yr., \$1.15; 3 for \$3.30.

CONCORD America's Finest Grape—4G25—Most popular grape in the world. Big, dark blue, sweet, juicy fruit in abundance. 2 yr., 35c each; 3 for 79c; 6 for \$1.40; 25 for \$4.95. 3 yr., 45c each; 3 for \$1.15; 10 for \$2.85.

Home Vineyard Special

4G44—One red, white, and blue. Excellent selection for home and garden.

1 Red Caco, 2 yr.50
1 White Niagara, 2 yr.40
1 Blue Concord, 2 yr.35

Catalog value \$1.25

Save 20%

All 3 for 98c

All 3 for **98c**

Large Bearing Age Grapevines

Why wait? You can enjoy grapes from your own vines next fall. Plant now! The vines we will send you have already produced one crop of fruit. Trimmed for planting. Choice of the following.

Fredonia—14G26.
Concord—14G27.
Niagara—14G28.

90c each;

3 for \$2.35.

Registered Raspberries

Propagated by the Ohio Small Fruit Improvement Association. Almost disease free; graded and dug by members of the Association under strictest inspection and regulations permitting 1% or less virus disease and not more than 1/4% of gall in parent plants. Spring Hill does not recommend you purchase these extra quality plants unless you can plant them away from uninspected raspberries. An isolated patch with proper care will far outyield ordinary plants and remain healthy for years. We can supply Bristol, Logan, and Cumberland only in registered plants.

Prices of Registered Raspberries, All Top Grade and Size Plants

Number Plants	Cumberland 4RR41	New Logan 4RR42	Bristol 4RR43
5	1.00	1.00	1.15
10	1.75	1.75	1.90
25	2.80	2.80	3.00
50	4.95	4.95	5.50
100	8.75	8.75	9.50
500	32.00	32.00	35.00

FAMILY RASPBERRY PATCH

4R35

10 New Logan, black 1.25
10 Latham, red 1.65
10 Sodus, purple 2.00

Regular catalog value \$4.90

All 30 for \$3.85.

RASPBERRIES Grow your own for Economy, Quality. Guaranteed best money making varieties.

NEW LOGAN 4R29—Recommended as the best home and commercial black raspberry. Big crops, outyields Cumberland however of equal size and quality. Top grade tips, 5 for 75c; 10 for \$1.25; 25 for \$2.25; 50 for \$4.15; 100 for \$7.50; 500 for \$25.00; 1,000 for \$42.50.

NEW BRISTOL 4R30—Growing in favor and popularity. Mid-season, fine for freezing and canning. Highest quality, large black fruits of excellent flavor. Top grade tips, 5 for 90c; 10 for \$1.50; 25 for \$2.50; 50 for \$4.50; 100 for \$7.85; 500 for \$27.50; 1,000 for \$47.50.

CUMBERLAND 4R31—The old standard and most popular black raspberry for years. Our strain of Cumberland is very good. Top grade tip plants 5 for 75c; 10 for \$1.25; 25 for \$2.25; 50 for \$4.15; 100 for \$7.50; 1,000 for \$42.50.

SODUS 4R32—New, giant purple raspberry. A recent New York Experiment Station introduction without an equal in its class and color. Top grade tips, 5 for \$1.20; 10 for \$2.00; 25 for \$3.50; 50 for \$5.90; 100 for \$10.25; 500 for \$37.00.

INDIAN SUMMER 4R33—(New giant, everbearing red raspberry). Earliest to ripen, bears a full crop in June and a large crop again in the fall. A sensation because of its size, flavor and unusual beauty. Choice 1st grade plants, 5 for \$1.15; 10 for \$1.90; 25 for \$3.75; 50 for \$7.00; 100 for \$12.50.

GIANT LATHAM 4R34—Universally the most popular red raspberry. Big, sweet, juicy, red berries on tall, strong, thrifty plants in greatest abundance. Thrives in all sections where raspberries can be grown. Choice 1st grade plants, 5 for 90c; 10 for \$1.65; 25 for \$3.50; 50 for \$6.50; 100 for \$11.00; 500 for \$34.00.



BEARING AGE RASPBERRIES

Quick crop plants are larger, stronger rooted and will bear fruit this summer.

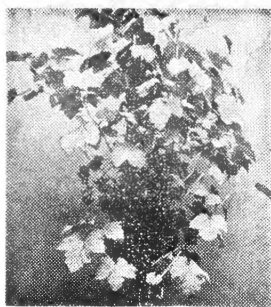
Variety	Number	5 Plants	10 Plants	25 Plants
New Logan	4R36	1.15	1.90	3.25
Bristol	4R37	1.25	2.15	4.00
Cumberland	4R38	1.15	1.90	3.25
Indian Summer	4R39	1.40	2.45	5.50
Latham	4R40	1.25	2.15	4.00



GOOSEBERRIES

CHAMPION—5G1—Dependable, large fruiting, vigorous growing. Bright green fruit ripens gold. 2 yr., 70c ea.; 3 for \$1.80; 6 for \$3.30. Fruiting age, 90c ea.; 3 for \$2.40; 6 for \$4.50.

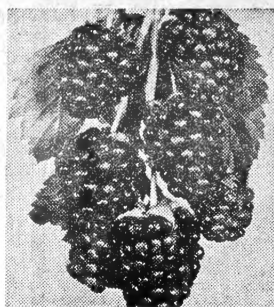
RED JACKET—5G2—Large, red berries; sweet when ripe, delicious for pies, sauces, jellies. 2 yr., 65c ea.; 3 for \$1.65; 6 for \$2.95. 3 yr. fruiting age, 80c ea.; 3 for \$2.15; 6 for \$3.90.



CURRENTS

RED LAKE—5C3—Recommended. Big crops of large, red fruit. Makes beautiful, fine flavored jelly. 2 yr., 60c ea.; 3 for \$1.50; 6 for \$2.65. Fruiting age, 85c ea.; 3 for \$2.40; 6 for \$4.50.

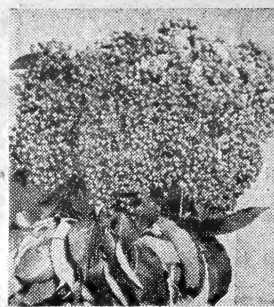
WILDER—5C4—The favorite currant for years. Big, bright red fruit. Vigorous grower and heavy producer. 2 yr., 50c ea.; 3 for \$1.20; 6 for \$2.15. 3 yr. fruiting age, 75c ea.; 3 for \$2.10; 6 for \$3.90.



BLACKBERRIES

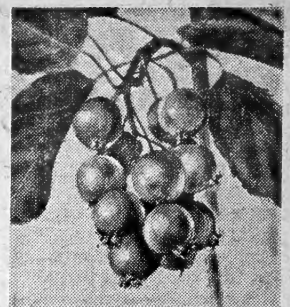
ELDORADO—5B5—Hardy, dependable variety. Big crops of juicy, highly-flavored fruit. Excellent for freezing, juice, jams, pies and canning. 6 for \$1.10; 12 for \$1.55; 25 for \$2.50; 100 for \$9.50; 500 for \$40.00.

QUICK CROP ELDORADO—5B6—Larger size, better rooted plants. 5 for \$1.35; 10 for \$2.25; 25 for \$4.50.



ELDERBERRIES

ADAM'S ELDERBERRY—5E7—Attractive, tall growing shrubs for your yard or garden. Heavy fruiting, large clusters of large, juicy berries. Makes splendid pies, sauces, jelly, juices, wines, etc. Far superior to the wild and common varieties. Spring Hill's high yielding berries are worth more money. Fruiting age, 3 ft., 98c each; 2 for \$1.85. 2 ft., 65c each; 3 for \$1.75; 6 for \$3.35.



SERVICE BERRY

AMELANCHIER—5S8—The beautiful hardy plants grow 8 to 11 ft. tall with white blooms in early spring. A handsome and useful ornamental shrub in any mixed planting. Yields an abundance of rich, dark red apple-shaped fruits, splendid for eating and cooking. Special low prices. 1 1/2 ft. size, 60c each; 3 for \$1.50. 3 ft. size, 80c each; 3 for \$2.20.

GIANT TASTY RHUBARB

CHIPMAN'S CANADA RED 5R9—The sweet, juicy, tender, rich stalks are red from top to bottom. Use all season. Productive; seedless; sweetest. 89c each; 3 for \$2.50; 6 for \$4.65; 25 for \$18.75.

GIANT RED McDONALD 5R10—Highest yielding. Very tender. Vigorous and hardy. Spring Hill guarantees true imported strain. 69c each; 3 for \$1.85; 6 for \$3.50; 25 for \$13.75.

VICTORIA 5R11—The standard commercial variety for many years; grown from re-selected seed. 2 yr. whole roots, 3 for 65c; 6 for \$1.10; 25 for \$3.75.



RHUBARB SPECIAL 5RS12

2 Chipman's Red 1 Giant McDonald
All 3 (unlabeled) \$2.20.

JUMBO QUICK—CROP RHUBARB

Roots or divisions are much larger with more eyes so they will produce more and larger stalks quicker.

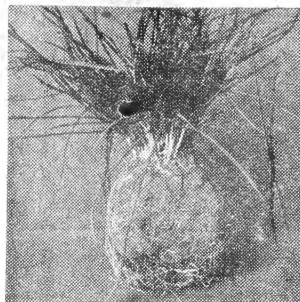
CHIPMAN'S CANADA RED—5R13—Jumbo division, \$1.35 each; 3 for \$3.75.

VICTORIA—5R14—Quick crop, jumbo whole roots, 50c each; 3 for \$1.35.

GIANT McDONALD—5R15—Jumbo division, \$1.00 each; 3 for \$2.70.

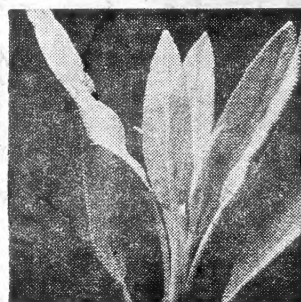
QUICK-CROP RHUBARB GARDEN 5RS16

2 Chipman's Red 2 McDonald
Regular \$4.70 catalog value
All 4 (unlabeled) for \$3.95.



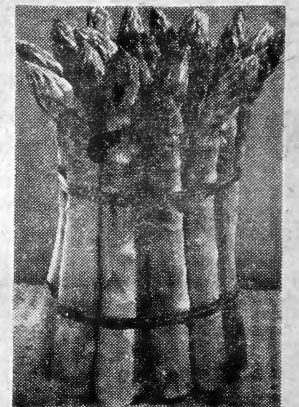
HARDY CHIVES

5C17—A perennial onion-like herb easy to grow. The finely-chopped leaves give a delicious flavor to hors d'oeuvres, salads, omelets, etc. You can cut plants throughout the season; pot and force indoors during winter. Bears attractive lavender blooms, a nice perennial plant in any garden. Save at Spring Hill's low prices. 2 year plants, 2 for 49c; 6 for \$1.25. Big clumps, like picture, 40c each; 3 for \$1.00.



HOLT'S MAMMOTH SAGE

5C18—One of our most beautiful, hardy flowering perennials for your garden. Useful as well as beautiful. The dried leaves indispensable for seasoning meats, sausage, stuffings, etc. Hardy plants grow for years without replanting. Handsome foliage and abundance of blue blooms cover the plants for weeks in late spring. 1 yr., 27c each; 3 for 69c; 6 for \$1.25. 2 yr., 39c each; 3 for \$1.00.



It's easy to grow your own ASPARAGUS

WASHINGTON—5C19—Grows well in most all soils and locations. When cared for, beds improve with age and last for many years. Fresh cut from your garden is best. Big annual yields. Giant Washington was developed under auspices of U. S. Dept. of Agriculture and is considered the leading variety. Practically immune to rust and has longest cutting period. Giant size, straight, tender, dark green stalks, tinged purple.

6 12 25 100
1st class, 1 yr. .49 .80 1.25 3.05
1st class, 2 yr. .75 1.15 1.98 5.95
Jumbo, 3 & 4 yr. .89 1.49 2.65 8.75

SNAPPY HORSE RADISH

5C20—(Maliner Kren) Grates up tender, crisp and white as snow, with nippy, sharp taste. Nothing better for flavor. Big crown plants, 25¢ each; 3 for 60¢; 10 for \$1.75. Rooted cuttings, 3 for 42¢; 12 for \$1.45.

3 for
42¢

Finest Hardy - High Yielding - NOVELTY NUT TREES



Manchurian Chestnut

5NT21—Blight resistant. (Castanea Malissima). Grows successfully where native trees have died. Bears young. Big, sweet nuts compare in size and quality to native varieties. 2 ft. size, 79c each; 3 for \$2.25; 12 for \$8.40. Fruiting age, 5 ft., \$2.25 each; 3 for \$6.35.



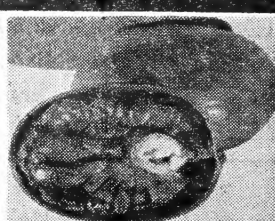
BUTTERNUT

5NT27—Big, pecan-shaped nuts with rich, white meat of wonderful flavor. Hardy, fast growing, high-yielding trees. Valuable for timber and shade. 2 ft. size, 40c each; 2 for 75c; 10 for \$3.45. 3 ft. 60c each; 3 for \$1.65. 5 ft. \$1.85 each; 3 for \$5.25.



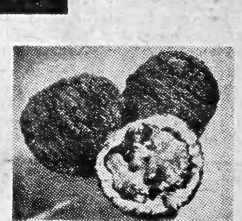
ENGLISH WALNUT

5NT23—Attractive, sturdy, broad growing, semi-dwarf trees (20 ft. tall). Very ornamental with medium-size, easy-to-crack, high quality nuts. Imported hardy strain. 3 ft. size, \$1.75 each; 3 for \$4.95. Big 5 ft. size, \$2.85 each; 3 for \$8.25.



HARDY PECAN

5NT24—Beautiful, rapid growing trees that are sturdy. Bushels of fine quality, plump pecans that are easy to crack. Northern grown strain. 2 ft. size, 69c each; 3 for \$1.85; 10 for \$5.75. 3 to 4 ft. size, \$1.50 each; 3 for \$4.25. 5 ft., \$2.45 each.



THOMAS WALNUT

5NT25—Improved black walnut of immense size with easy-to-crack thin shell. Trees grow fast, bear young. Big grafted trees, 4 ft. tall, \$2.65 each; 2 for \$5.10. 2 ft. size, \$1.69 each; 3 for \$4.75.



BLACK WALNUT

5NT26—Make excellent, sturdy, tall ornamental trees. Valuable for timber, shade and nuts with famous black walnut taste. 2 ft. tall, 2 for 36c; 10 for \$1.45. 3 ft. tall, 3 for 75c; 10 for \$1.95. 6 to 8 ft., \$2.75 each.



CHINESE WALNUT

5NT22—Handsome trees with broad, spreading tops. Trees bear young. Kernels very sweet. 1 ft. size, 50c each; 3 for \$1.35. 3 ft. size, \$2.25 each; 3 for \$6.30.



American Hazel Nut

5NT28—Quick bearing. Easy to crack, large, sweet kernels, shell out whole. Fine for shrub borders or hedges. 1 ft. size, 40c each; 2 for 75c; 6 for \$2.10; 25 for \$8.25. Fruiting age, 3 ft., \$1.25 each; 3 for \$3.45.

Use our "Easy to Subscribe" MAGAZINE SERVICE—Enclosed in this catalog are subscription order blanks making it easy for you to order your favorite magazines at lowest prices. Save time, trouble and expense and be assured of safe, prompt service. Merely send your order for the magazines you want to FARM JOURNAL, SUBSCRIPTION SERVICE DEPT., Farm Journal Bldg., Philadelphia 5, Penna., or to the POPULAR GARDENING, 90 State Street, Albany, New York (coupon enclosed). Mail coupon with check, money order or cash, covering the subscription prices of the magazines you select for your entire family.

AMERICAN PERSIMMON 5T29—U.S. Dept. of Agri. bulletin reports persimmon most nutritious fruit grown in U.S. Plant 2 or 3 trees for good fruit production. Fine ornamental trees for yard or farm. Fruit ripens in fall but is not good till freezing weather. 1 1/2 ft. size, 2 for 70c; 6 for \$1.75. 4 ft. size, \$1.25 each; 3 for \$2.98.

VIBURNUM AMERICANA 5T30—(High bush cranberry) Fine, tall growing, ornamental shrub with splendid foliage and big clusters of red berries that remain on plants all winter. Besides their ornamental value the fruit makes fine jellies, jams and bird food. 3 yr. 18 inch size, 75c each; 3 for \$1.95. 3 ft. size, \$1.10 each; 3 for \$2.98.

Spring Hill NURSERIES

EST. 1849

GUARANTEED PLANTS Buy With Confidence

MAMMOTH HICKORY—5NT31—Grown from large seed. One of our most beautiful and sturdy trees, valuable for timber. Excellent for shade and big crops of nuts that taste so good. Reduced prices. 2 ft. size, 65c each; 3 for \$1.75.

Stately Lillies

Dependable and easy to grow, hardy garden lillies. Bulbs multiply each year. Not included in one cent sale.

- SUNSET LILY—611**—(Pardalinum) Brilliant scarlet, handsomely marked. 50c each; 3 for \$1.29.
- CRIMSON BEAUTY LILY—612**—(Umbellatum) Free flowering fiery-crimson. 48c each; 3 for \$1.25.
- SCARLET ORCHID LILY—613**—(Sprekelia) Intense, brilliance and grace of orchids. 75c each; 3 for \$2.10.
- DOUBLE LILY—614**—(Tigris Fl. Pl.) Most beautiful of all double varieties. 50c each; 3 for \$1.29.
- DREAM LILY—615**—(Phillipense) Huge, fragrant snow-white. 65c each; 3 for \$1.75.
- TIGERLILY—616**—(Tigrinum) Big, flowering orange. 45c each; 3 for \$1.19.
- REGAL LILY—617**—America's favorite hardy lily. Great profusion of blooms (often 20 to 25 on a stem) throughout June and July on 3 to 4 ft. stems. Exquisitely fragrant white flowers with golden throats and pink tinge on outer petals. Blooming size, 2 for 50c; 6 for \$1.40. Big, 6 to 8 inch bulbs, 40c each; 2 for 75c; 6 for \$1.98.



LILLIES



Spring Hill's Hardy Everblooming Big H. T. Garden Roses

These hybrid tea roses will bloom for you this summer.

BIG SAVINGS COLOR SPECIAL

6RG34—You get beauty in bud; colorful, large, double flowers, abundant continuous blooms, good foliage, vigor, fragrance, long stems. Mostly the same fine varieties listed in our big catalog. Spring Hill makes this offer AT A SPECIAL LOW PRICE for those who care little for names but want lots of blooms. One each, scarlet, pink, yellow, bi-color, white and crimson. Spring Hill's selection of everblooming H. T. varieties one of six different colors, shipped unlabelled in bundles of six only.

Big, 2 yr., No. 1 1/2 grade plants.....Collection of 6 plants for \$2.98 | Big, 2 yr., No. 1 grade plants.....Collection of 6 plants for \$3.85

PRIZE WINNING EVERBLOOMING PATENTED ROSES

Patented roses are new varieties with outstanding merit that have been granted patent rights. This gives the originator protection and encourages him to continue his research. The ten patented roses listed are all fully double blooming hybrid tea roses that will bloom profusely in your garden this summer.

CHARLOTTE ARMSTRONG—6R36—(Plant Pat. No. 455) Considered one of the finest roses in existence. Brilliant cerise. \$1.50 each; 3 for \$3.75; 12 for \$15.00.

TAFETA—6R37—(Plant Pat. No. 716) Begonia-rose-salmon and gold, intriguing color-harmony. More popular each year. \$1.50 each; 3 for \$3.75; 12 for \$15.00.

SUTTER'S GOLD—6R38—(Plant Pat. No. 885) All American rose selection of 1950. Buttercup-yellow steeped in coral. \$2.00 each; 3 for \$5.00; 12 for \$20.00.

FORTY NINER—6R39—(Plant Pat. No. 792) Most brilliant of all bi-color; rich chrome-yellow outside, vivid red inside. \$1.75 each; 3 for \$4.40; 12 for \$17.50.

PEACE—6R40—(Plant Pat. No. 591) America's most popular rose. Unbelievable massive size and delicate colors of pink and gold. \$2.00 each; 3 for \$5.00; 12 for \$20.00.

CRIMSON GLORY—6R41—(Plant Pat. No. 105) World's most popular red rose. Winner of most all awards. Recommended. \$1.50 each; 3 for \$3.75; 12 for \$15.00.

CLIMBING ROSES FAST GROWING • HARDY

Appreciated for their scores of fragrant, colorful flowers and pleasing summer foliage. Grow them on trellises, fences, walls or any place where the garden picture needs accent or coverage of some architectural feature. All varieties listed make beautiful, long-lasting bouquets.

CLIMBING SILVER MOON—6CR47—Large white. \$1.50 each; 3 for \$3.75; 12 for \$15.00.

CLIMBING DR. VAN FLEET—6CR48—Double, shell pink. \$1.50 each; 3 for \$3.75; 12 for \$15.00.

CLIMBING AMERICAN BEAUTY—6CR49—Double, bright red. \$1.50 each; 3 for \$3.75; 12 for \$15.00.

Choice of above 3 climbing roses. \$1.50 each; 3 for \$3.75; 12 for \$15.00.

CLIMBING PAUL'S SCARLET

6CR50—Favorite, large flowering climbing rose. The parent of Bloze and winner of Gold Medal at the National Society's Exhibition. Striking brilliant scarlet color. Large, solitary flowers bloom over a long period. New, reduced prices.

2 yr. No. 2.....55c each; 3 for \$1.48
2 yr. No. 1.....79c each; 3 for \$2.20
3 yr. giants, XX.....\$1.10 each; 3 for \$2.98

EVERBLOOMING CLIMBING ROSES

Plant these colorful climbers for array of gorgeous colors on porches, arbors or trailing over fences. Pleasing summer foliage and hundreds of large, double, long, strong-stemmed blooms for cutting throughout the summer

CLIMBING P. S. DU PONT—6CR42—Beautiful, big, double, fragrant, high golden-yellow blooms throughout the summer. 2 yr. No. 1 plants, \$1.00 each; 3 for \$2.75. 2 yr. giants XX, \$1.25 each; 3 for \$3.45.

CLIMBING TALISMAN—6CR43—The most popular hybrid tea, everblooming climbing rose. Marvelous buds with lovely, big, double blooms of brilliant scarlet-orange and rich yellow. 2 yr. No. 1, \$1.00 each; 3 for \$2.75. 2 yr. giants XX, \$1.25 each; 3 for \$3.45.

CLIMBING NEW DAWN—6CR44—(Plant Patent No. 1) Large, double blooms continuously all season of lovely apple blossom pink with delicate old rose fragrance. Healthy, hardy, lustrous green foliage; long stems; big buds for lovely bouquets. 2 yr. No. 1, \$1.00 each; 3 for \$2.75. 2 yr. XX, \$1.25 each; 3 for \$3.45.

CLIMBING J. H. NICHOLAS—6CR45—(Plant Patent No. 457) Immense, fully double intensely fragrant, deep rose-pink blooms continuously from late spring until winter. The everblooming performance is amazing, the plants are vigorous, extremely hardy, healthy and of medium height. Big, double, hybrid, tea-like blooms, often 5 to 6 inches across on long stems. No. 1 size, \$1.69 each; 3 for \$3.75.

CLIMBING BLAZE—6CR46—(Plant Patent No. 10) Most popular of all climbing roses. Dazzling in its brilliance, magnificent in its profusion of vivid, scarlet blooms. Tall vigorous growing with healthy foliage. Extremely winter hardy. The large blooms (Produced in clusters) almost conceal the foliage in spring with intermittent blooms through the summer and plenty of color again in the fall. 2 yr. No. 1, \$1.25 each; 3 for \$3.45. 2 yr. XX giants, \$1.69 each; 3 for \$3.75.



Cl. Talisman



Cl. Dr. Nichols

EVERBLOOMING FLORIBUNDA ROSES

Gorgeous, large-flowered, cluster roses that bloom profusely all summer. Plant among shrubs and exergreens. Make colorful borders or hedges; especially nice when massed in groups. Also excellent for long-lasting floral arrangements. Use in place of common shrubs for color all summer; sturdy, healthy, hardy plants.

ELSE POULSEN—6R51—Cheerful, bright rose-pink, semi-double. Flowers continuously all season.

IMPROVED LAFAYETTE—6R52—Immense clusters of large, fragrant, vivid crimson blooms. A popular and favorite variety. Erect plants grow 3 ft. tall.

FLORADORA—6R53—(AAR'S Award 1945) Spectacular for its brilliance and profusion of big, double camellia-like, cinnabar red flowers. Abundant bloomer. Choice of above 3 favorite floribundas: No. 1, 2 yr., 95c each; 3 for \$2.70; 10 for \$8.50.

(Patented Floribunda Roses—see big Catalog)

Spring Hill's Sensational 1c Sale EXTRA VALUE PAGE 1c buys an extra article

New Hybrid Giant Sweet Williams
8P9—Sweet strains imported direct from Holland. Giant blooms, rainbow colors, during May and June. 3rd year wafers, amazing beauty. 30¢ each.
SALE PRICE 2 for 39c

SHASTA DAISY CONQUEROR
8P9—Immense white flowers, yellow centers in great profusion. Excellent, long lasting bouquets. 2 yr., 30¢ each.
SALE PRICE 2 for 31c

SWEET SCENTED TUBEROSE
8P10—(Double Pearl) Large, double flowers of thick, wax-like texture. Rich, exotic fragrance, strong stems, lovely white color. Fine for charming bouquets. Big, 1st size, 3 to 4 inch bulbs, 30¢ each.
SALE PRICE 2 for 31c

HARDY PRIVET
6H11—Amur River Privet. One of the most beautiful fast growing hedges. Clip to desired height and shape. Strong plants. 1 ft. size, 15c each; 2 for 16c.
SALE PRICE 50 for \$3.25

Economy SHADE TREES BEST VARIETIES

Outclassing all competition in small strain, healthy trees. Best varieties.

WEeping Willow	SILVER MAPLE	LOMBARDY POPLAR	CHINESE ELM	SUGAR MAPLE	HONEY LOCUST	CHINESE CHESTNUT	SILVER MAPLE	SYGAMORE	WHITE BIRCH	NORWAY MAPLE	DOGWOOD
(Select weeping strain) 3 to 4 ft. size, 55c each.	(Fast growing maple) 3 to 4 ft. size, 50c each.	(Tall, narrow growing) 2 to 3 ft. size, 35c each.	(Rapid growing strain) 3 to 4 ft. size, 45c each.	(The famous hard maple) 3 to 4 ft. size, 60c each.	(Gleditsia Inermis—Improved thornless variety) 3 to 4 ft. size, 75c each.	(Bright resistant) 2 ft. size, 85c each.	(Fast growing tree) 5 to 7 ft. size, \$1.95 each.	(Rapid growing) 3 to 4 ft. size, 50c each.	(European whitest bark) 1 1/2 to 2 ft. size, 55c each.	(Fine avenue tree) 4 to 5 ft. size, \$2.50 each.	(White flowering cornus florida) 1 to 1 1/2 ft. size, 50c each.
SALE PRICE 2 for 56c	SALE PRICE 2 for 51c	SALE PRICE 2 for 36c	SALE PRICE 2 for 46c	SALE PRICE 2 for 61c	SALE PRICE 2 for 76c	SALE PRICE 2 for 99c	SALE PRICE 2 for 1.96	SALE PRICE 2 for 51c	SALE PRICE 2 for 56c	SALE PRICE 2 for \$2.51	SALE PRICE 2 for 51c

BLUE SPRUCE	Giant Mallow Marvel HARDY HIBISCUS	GOLDEN BELL FORSYTHIA
8E28—(Picea Parviflora) Good blue spruce or exsopite and add to value of property. 4 years old, 6 to 7 inch, 60¢ each. SALE PRICE 2 for 61c	8P30—Largest blooming perennial, paired colors of pink and white (no choice of colors). Blooms throughout the summer months. 2 yr. plants, 20¢ each. SALE PRICE 2 for 30c	8B31—(Spectabilis) Masses of deep golden-yellow flowers fill plants in early spring. Cut for indoor use for bouquets. 1 1/2 to 2 ft. size, 60¢ each. SALE PRICE 2 for 51c

Double Red Rose Of Sharon
6532—(Althaea) Huge, double hollyhock-like blooms in great profusion. 2 yr., 2 ft. size, 50c each;
SALE PRICE 2 for 51c

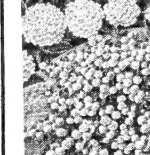
TOM THUMB IRIS
6P33—Miniature darlings 6 to 12 inches tall. Often over 100 blooms per plant, excellent for borders. Mixed colors; yellow, blue, white and purple. 42c each;
SALE PRICE 2 for 43c



LOMBARDY POPLAR

6T26—Stately, tall, narrow trees of rapid growth with glossy leaves that shimmer in the sunlight. Excellent along driveways as tall screens or hedges. 4 to 6 ft., 85¢ each.

SALE PRICE 2 for 84c



OLD FASHIONED SNOWBALL

6B27—Big, snow-white blooms in May. Beautiful for bouquets. Brilliant autumn foliage. Good plants, 1 1/2 ft., 80¢ each.

SALE PRICE 2 for 81c



Fringed Fragrant Hardy GARDEN PINKS

6P28—New, dwarf, semi-double blooms in great profusion throughout spring. Exquisite fragrance, silvery-blue foliage. 2 yr., 27¢ each;

SALE PRICE 2 for 28c



PEONY COLOR SPECIAL
7P627—Amazing special low price (up to 50% savings). The same big 3 to 5 eye plants, prize winning peonies. Our selection of varieties, your choice of colors, red, pink or white. Aliko or assorted.
75c each; 3 for \$1.99

LILIES OF THE VALLEY
7L28—Lovely, fragrant, cream-white buds on 6 inch stems. Easy to force indoors and hardy outdoors. Grow best planted in shady locations. Guaranteed to bloom, big 3 yr. pls.
3 for 55c; 6 for 89c; 10 for \$1.25

SACRED TIGER LILY
7L29—Mixed rainbow colors. The large, gorgeously marked blooms appear 40 days for many weeks throughout the summer. Sacred to Aztec worshippers. Easy to grow; bulbs multiply. Care same as gladiol.
3 for 50c; 6 for 95c; 12 for \$1.75

Giant Flowering MAGNOLIA
7T30—(Magnolia Soulangiana) Showiest of all magnolias, one large tree in bloom will dominate a neighborhood. The dwarf trees are completely covered with large, crimson buds that open into fragrant rose-pink flowers. New reduced price.
3 yr., 18 to 24 inch, \$1.75 each; 9 for \$4.96.
Flowering plants B&B, 3 ft., \$6.85 each; 5 ft., B&B, \$9.85 each
3 for \$4.95

BLACK MAGIC IRIS
7P31—Equislate, rich, velvety blooms nearly black with satin sheen. Strong growing, free flowering, semi-dwarf (18 inches). Blooms spring and again in fall.
Highly recommended 45c each; 3 for \$1.15

HARDY BEGONIA
7P32—(Begonia Evansiana) Continuous blooms of lovely pink flowers above handsome red veined foliage all summer. Grows best in semi-shade. Much for winter protection. Plants increase.
29c each; 3 for 75c; 12 for \$2.60

FATHER'S ROSE
7P33—Often called the Golden Rose of China. Named for Father Hugo, who discovered it in China. Tall growing, 1 to 3 foot bushes are a mound of gold in early spring. Perfectly hardy without protection.
2 to 3 ft. size, 85c each; 3 for \$2.35
3 for \$2.35

8 COLORFUL GIANT FLOWERING HARDY PHLOX

Will bloom abundantly for you this summer and many more years. All are new, improved, large flowering varieties. All large, No. 1 plants.

- BRIGHT EYES—73P1**—Brilliant red, glistens like rubies.
- DAILY SKETCH—7P2**—Massive salmon-pink, crimson eye.
- MARY LOUISE—7P3**—Finest, clear white. Outstanding.
- CHAS. CURTIS—13P4**—Vivid flame or sunset red. Large.
- BLUE BOY—7P5**—Nearest true blue, lavender sheen.
- LILLIAN—7P6**—Lovely cameo-pink, perpetual bloom.
- SAN ANTONIO—7P7**—Beautiful rich ruby-red, vigorous.
- SALMON GLOW—7P8**—Rich salmon orange, strong growing.

Choice of above 8 varieties of phlox, large No. 1 field grown plants, 36c each; 3 for 95c.

PHLOX GARDEN
7P69—Garden of 8 hardy phlox, one each of varieties listed above (not labeled).
8 for \$2.15

BIG SAVING
Order phlox by color - 7P510
Spring Hill selects some of the best named phlox. Choice of white, red, blue and pink.
2 for 55c; 4 for 95c
10 for \$2.30

Large Flowering CANNAS

Large decorative foliage and colorful continuous blooms all summer. Bulbs increase, dig each fall. Big hard picked No. 1. 3 to 5 eye roots, unsurpassed for quality.

- APRICOT—7C11**—Deep apricot overcast salmon. 25c each; 3 for 49c; 12 for \$1.70.
- WYOMING—7C12**—Big, fiery orange, bronze foliage. 25c each; 3 for 49c; 12 for \$1.70.
- RICHARD WALLACE—7C13**—Brilliant pure yellow. 27c each; 3 for 55c; 12 for \$1.80.
- CITY OF PORTLAND—7C14**—Massive, vivid pink. 27c each; 3 for 55c; 12 for \$1.80.
- THE PRESIDENT—7C15**—Large, pure, fiery-scarlet flowers in profusion. 28c each; 3 for 60c; 12 for \$1.95.

PRESIDENT SCARLET CANNA BED—7C17—A grand display of fiery-red flowers all summer. No. 1 hand picked roots, 3 to 5 eye, 12 for \$1.95; 24 for \$3.60.

TUBEROUS BEGONIAS

DOUBLE CAMELLIA FLOWERING TUBEROUS BEGONIAS

Mammoth blooms (often large as coffee cups). The fancy flowers resemble and are as exquisite as expensive camellias. Super strain Belgium plants offered in lovely colors. Begonias grow best in rich, well drained soil and a shady location. Set outdoors after danger of frost is past. Before cold weather, dig and store where they will not freeze. Wonderful for potting and blooming indoors.

- Yellow—7B18
- Crimson—7B19
- Pink—7B20
- Scarlet—7B21
- Orange—7B22
- White—7B23

Extra choice bulbs produced by Brown Bull Ranch, Famous Hybridizers and growers. 3 to 4 inch bulbs, 2 for 60c; 4 for 89c;
12 for \$2.15

BEGONIA MIXED SPECIAL—7B24—The same camellia type blooms and colors yellow and scarlet. Bulbs a size smaller but guaranteed to bloom satisfactory this summer. (No broken collections). 6 for 75c; 2 collections, 12 for \$1.39.

OLD FASHIONED BLEEDING HEART

7P25—(Dicentra Spectabilis) Truly romantic, heart-shaped flowers of great beauty and gracefulness. Lovely in mixed bouquets. Tall growing with largest flowers. Grows best in semi-shade producing its profusion of blooms for several weeks in late spring.
69c each; 3 for \$1.89
6 for \$3.60

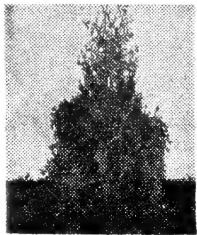
RHODODENDRON

7526—(Catawbiense Grandiflorum) Fine evergreen shrubs. Easy to grow in acid soils. Gorgeous rosy-lilac flowers in huge clusters. Broad, leathery, evergreen foliage with distinguished appearance. Easy and satisfactory variety to grow.
Special low price. Big, 4 yr. plants, \$1.25 each..... 3 for \$3.45

make *Big Money* Grow Expensive EVERGREENS—A Thrift Suggestion

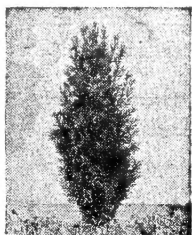
IT'S EASY; ENJOYABLE; ECONOMICAL AND THRILLING

A Shrewd Purchase—Big Returns Quick.—Excellent Investment—ORDER NOW!



PYRAMID ARBOR VITAE

8E1—Dark green all year. Densely branched, tall, narrow column. grows naturally into tall, slender column. Very popular as a landscape variety. Pot plants, 8 to 10 inches tall, 50¢ each; 3 for \$1.35. Heavy (like picture) 15 to 18 inches tall, \$1.65 each; 2 for \$3.00. Big landscape size, 3 ft. tall, \$5.25 each; 2 for \$9.95.



TAXUS HICKSI

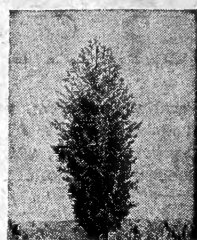
8E2—(Upright Columnar Yew)—Semi-dwarf, tall, narrow habit, columnar. Best evergreen for planting in shade. Most winter hardy and dependable. Pot plants, 8 to 10 inches tall, 50¢ each; 3 for \$1.35. Heavy (like picture) 15 to 18 inches tall, \$1.85 each; 2 for \$3.45. Big, landscape size, 2 to 2½ ft. tall, \$5.00 each; 2 for \$9.50.



Colorado Blue Spruce

8E3—One of the showiest evergreens. Perfect shape, impressive blue color add beauty to any property. Special savings. 4 to 6 inch transplanting size, 5 for \$1.00. (5 to 7 inch size, Sale Price 2 for 61c). 2 ft. heavy (like picture) \$7.50 each.

5 for \$1.00



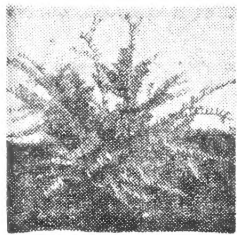
IRISH JUNIPER

(Fastigata)—8E4—One of our best, tall, narrow, formal evergreens. Rapid growing but does not grow over about 6 feet tall. Beautiful in any planting. Pot plants, 6 to 8 inches tall, 45¢ each; 3 for \$1.20. Heavy (like picture) 15 to 18 inches tall, \$1.35 each; 2 for \$2.45. Big, landscape size, 3 ft., \$4.50 each; 2 for \$8.50.



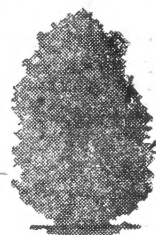
AMERICAN ARBOR VITAE

8E5—A good, fast, tall growing variety. Makes good screens, hedges and used in foundation and group plantings. 4 year, transplanting size, 8 to 10 inches tall, 35¢ each; 3 for 90¢. Heavy (like picture) 15 to 18 inches tall, \$1.45 each; 2 for \$2.65. Big, landscape size, 3 ft. tall, \$4.50 each; 2 for \$8.50.



TAXUS SPREADING

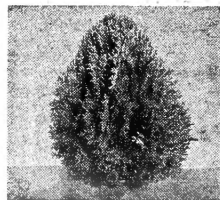
(Cuspidata)—8E6—Horizontal or spreading. The branches grow horizontal, like Juniper Pfitseriana; likes shade. Pot plants, 8 to 10 inches tall, 50¢ each; 3 for \$1.35. Heavy (like picture) 15 to 18 inches tall, \$1.85 each; 2 for \$3.45. Big, landscape size, 2 ft. tall, \$5.00 each; 2 for \$9.50.



BOXWOOD

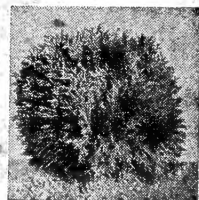
8E7—(Buxus Sempervirens) Winter hardy, compact, dwarf variety. No other evergreen has the charm and beauty of Boxwood. Pot plants, 6 to 8 inches, 39¢ each; 3 for \$1.10; 10 for \$3.25.

3 for \$1.10



GOLDEN BIOTA

(Dwarf Golden Oriental Arbor Vitae)—8E8—Most attractive and perfect shaped of all dwarf, compact evergreens. Pot plants, 4 to 6 inches tall, 50¢ each; 3 for \$1.35. Heavy (like picture) 12 to 15 inches tall, \$1.65 each; 2 for \$3.00. Big, landscape size, 2 ft. tall, \$4.75 each; 2 for \$9.00.



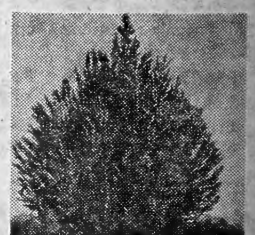
GLOBE WOODWARDI

8E9—Best and most compact, dark green, dwarf, symmetrical variety. Grows naturally in ball shape, extra good for landscaping. Pot plants, 6 to 8 inches tall, 50¢ each; 3 for \$1.35. Heavy (like picture) 12 to 15 inches \$1.50 each; 2 for \$2.75. Big, landscape size, 2 ft., \$4.25 each; 2 for \$7.95.



JUNIPER PFITSERIANA

8E10—Best, most planted, fast growing, spreading, landscape evergreen for all sections and soils. Pot plants, 6 to 8 inches tall, 65¢ each; 3 for \$1.45. Heavy (like picture) 15 to 18 inches tall, \$1.65 each; 2 for \$3.00. Big, landscape size, 2 to 3 ft. spread, \$5.25 ea.; 2 for \$9.95.

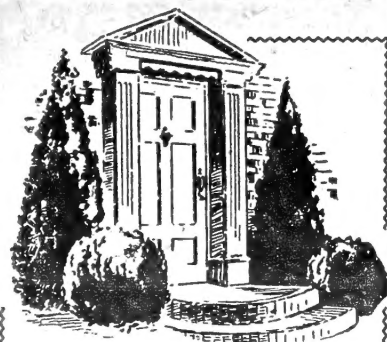


SPINY GREEK JUNIPER

(Excelsa Stricta)—8E11—Attractive bluish-green foliage, dense, formal conical-shaped, dwarf plants that do not require trimming. Pot plants, 4 to 6 inches tall, 45¢ each; 3 for \$1.20. Heavy (like picture) 12 to 15 inches tall, \$1.50 each; 2 for \$2.75. Big landscape size, 2 ft. tall, \$4.25 each; 2 for \$8.00.

EVERGREEN DIGGING NOTICE

All evergreens for shipping will be fresh dug from our field bare root and wrapped in moist peat. Present day delivery and packing costs make it too expensive to ship balled and burlapped. Our experience shows that bare root evergreens deliver better and grow just as good. Balled and burlapped evergreens available when you drive to the nursery.



ENTRANCE GROUP SPECIAL

(19% Discount) 8E12

- 2 Pyramid Arbor Vitae, matched pair, 2 to 2½ ft. \$ 6.50
- 2 Globe Arbor Vitae, matched pair, 1½ ft. tall & broad 5.75

Certified catalog value.....\$12.25

All 4 for \$9.95.

RAPID-GRO

8PF15

We recommend this fine product to all gardeners for more productive gardens; better lawns; larger and more beautiful blooms. When planting soak roots of roses, shrubs, trees, etc. 3 to 5 minutes in Rapid-gro (simply use 1 teaspoon per quart or 4 teaspoonsful per gallon, etc.) dip strawberries, perennials for a few seconds. Pour remainder of solution around plants. Rapid-gro keeps indefinitely if stored in dry place. Complete instructions with each package.

- 1 pound (makes 22 gallons) \$1.25
- 2 pounds (makes 44 gallons) 2.35
- 5 pounds (makes 110 gallons) 4.50
- 10 pounds (makes 220 gallons) 8.75

Special, low prices



Season's Supply

69c

DOORSTEP ENTRANCE GROUP

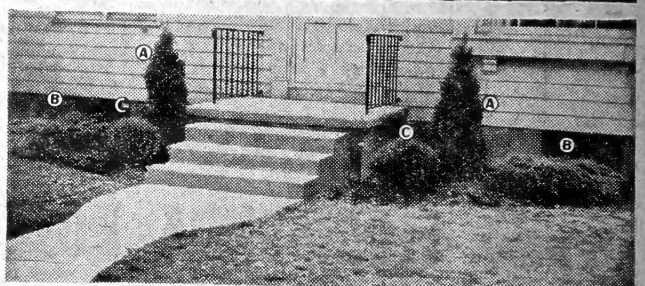
8E13

- A—2 Pyramid Arbor-Vitae, 8 yr., 15-18 inch tall spine like, 2 for \$4.00.
- B—2 Juniper Pfitseriana, 6 yr., 10-15 inch spreading, 2 for \$4.00.
- C—2 Globe Arbor-Vitae, 6 yr., 10-14 inch wide, 2 for \$4.00.

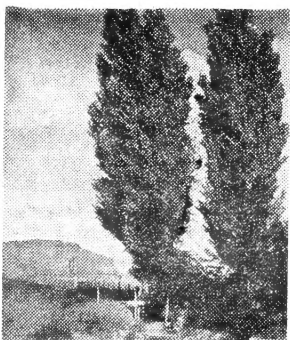
2 each of above 3 varieties junior landscape size shipped individually wrapped in finest grade peat. Peat is fine for evergreens, mix with dirt when planting.

Regular \$12.00 Value

All 6 for \$7.98

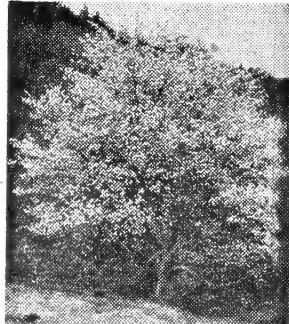


Drive to Nursery for Large Landscape Sizes — Finest Varieties — Low Prices



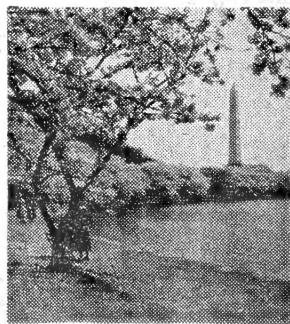
Lombardy Poplar

8T18—A stately, tall, narrow tree of rapid growth with glossy leaves that shimmer in the sunlight. Excellent along driveways, as tall screens or hedges. 2 to 3 ft. size, 2 for 36c. 8 ft. size, 98c each; 3 for \$2.40; 6 for \$4.50; 25 for \$17.95. Big, 8 to 10 ft. size, \$1.45 each; 3 for \$3.75; 6 for \$7.00.



Paul's Scarlet Hawthorne

8T16—(Crataegus Oxyacantha Splendens)—Double flowering imported English variety. Hardy, compact, bushy dwarf trees are ablaze with bright red blooms during spring; scarlet fruit in fall. Big, branched trees, 4 ft., \$1.98 each; 3 for \$5.55. 6 ft. size, \$3.85 each.



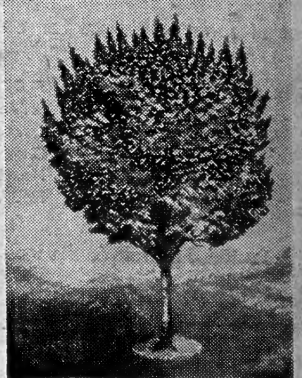
Flowering Cherry

8T17—(Kwanzan)—The best double, giant flowering deep rosy-pink variety. Made famous by thousands of visitors each spring in Washington D.C. Grafted trees that start blooming 1st or 2nd year. 3 to 4 ft. size, \$2.75 each; 3 for \$7.95. 5 to 6 ft. size, \$3.75 each; 3 for \$10.95.



European White Birch

8T19—(Betula Alba)—Beautiful, fast growing, well shaped, tall, upright trees with graceful, arching outside branches. Books 700 years. B. C. were written upon its white and peeling bark. 1½ to 2 ft. size, 2 for 56c.



Purple Leaf Plum

8T20—(Prunus Pissardi Thundercloud)—Deep bronzy crimson-purple foliage and shell pink blooms on dwarf, compact growing 12 to 15 ft. plants. Stays red all summer. Select red strain. 3 ft. size, \$2.00 each; 3 for \$5.50. 6 ft. size, \$3.25 each; 3 for \$9.45.

GIANT PUSSY WILLOW

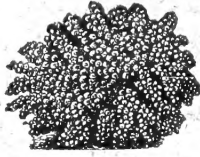


9S1—(Salix Caprice)—True giant flowering French cut-flower strain. Easy to grow and bloom. Big, silvery-pink catkins 1 to 2 inches long. 2 yr., 12 to 18 inch, 38c each; 3 for \$1.00. 3 yr. 3 ft., 80c each; 3 for \$2.10.

3 for \$1.00

BEAUTY BUSH

9S2—(Kolkwitzia) Clusters of beautiful deep pink flowers by the thousands fill the graceful, hardy plants each spring. Special economy prices.



2 yr., 12 to 18 inch, 45c each; 3 for \$1.15. 2 yr., 2 ft. size, 65c each; 3 for \$1.75.

3 for \$1.15

EVERBLOOMING RED SPIREA

9S3—(Anthony Waterer) Dwarf, everblooming, compact growing shrubs with dense foliage and bright rose-red flowers all summer and fall. 2 yr., 9 to 12 inch, 35c each; 3 for 89c. 2 yr., 12 to 15 in., 50c each; 3 for \$1.25. 3 yr., 18 inch, 75c each; 3 for \$1.98.



3 for 89

SWEET SHRUB

9S4—(Calycanthus)—Handsome, large glossy foliage. Unique chocolate-red, spicyly fragrant flowers.



2 yr., 12 to 18 inch, 38c each; 3 for \$1.00. 3 yr., 18 to 24 inch, 75c each; 3 for \$1.95.

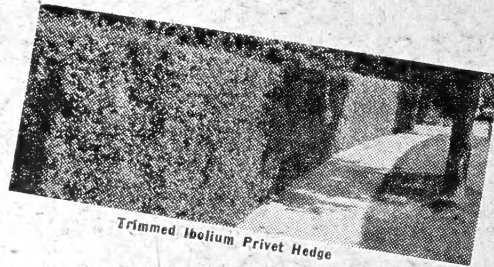
3 for \$1.00

Finest HARDY SHRUBS

BEAUTIFY YOUR HOME FOR A LIFETIME...

PLANT NOW!
these vigorous shrubs grow more beautiful with the years

AMERICA'S BEST HARDY HEDGES



Trimmed Ibolium Privet Hedge

AMUR RIVER NORTH PRIVET

9H5—(The hardest privet hedge) Beautiful, upright, fast growing, compact hedge. Ideal for clipped hedge. Plant one foot apart.

15-18 in., 10 for \$1.40; 25 for \$2.75; 100 for \$ 9.75
18-24 in., 10 for \$2.20; 25 for \$4.50; 100 for \$16.00
2-3 ft., 10 for \$2.95; 25 for \$6.25; 100 for \$22.50

NEW IBOLIUM PRIVET

9H6—(Recommended) Hybrid of California and Amur River. Has lustrous foliage and is extremely hardy. Plant one foot apart. (50 or more plants of a kind and size at 100 rate).

9-12 in., 10 for \$1.10; 25 for \$2.00; 100 for \$ 6.50
12-18 in., 10 for \$1.50; 25 for \$3.00; 100 for \$10.50
2-3 ft., 10 for \$3.25; 25 for \$6.75; 100 for \$25.00

CALIFORNIA PRIVET

9H7—(Most beautiful hardy privet). Sometimes freezes North of Ohio River. Lustrous green, handsome hedges. Plant one foot apart. Lowest prices; quality plants.

9-12 in., 10 for \$.85; 25 for \$1.50; 100 for \$ 5.00
18-24 in., 10 for \$1.75; 25 for \$3.60; 100 for \$12.75

SPIREA VAN HOUTTEI

9H8—(Bridal Wreath) Beautiful, hardy, easy to grow shrubs. Masses of lovely white blooms in spring.

9-12 in., 10 for \$1.10; 25 for \$2.00; 100 for \$ 6.75
12-18 in., 10 for \$1.60; 25 for \$3.25; 100 for \$11.50
18-24 in., 10 for \$2.25; 25 for \$5.00; 100 for \$18.50

RED LEAVED BARBERRY

9H9—(Atropurpurea) Bright red foliage all summer. Plant 1 ft. apart for hedge; 2 ft. for borders.

9-12 in., 10 for \$1.95; 25 for \$4.25; 100 for \$16.00
15-18 in., 10 for \$2.60; 25 for \$5.75; 100 for \$22.00
18-24 in., 10 for \$3.50; 25 for \$7.85; 100 for \$30.00

BARBERRY GREENLEAF

9H10—(Thunbergii) Best protective and berried hedge. Lovely autumn coloring; fruits all winter.

9-12 in., 10 for \$1.25; 25 for \$2.50; 100 for \$ 9.00
12-18 in., 10 for \$1.80; 25 for \$3.75; 100 for \$13.00
18-24 in., 10 for \$2.75; 25 for \$5.75; 100 for \$21.00

PINK BUSH HONEYSUCKLE

9H11—(Lonicera Tartarica) Extra winter hardy, rapid growing, tall, spreading plants for tall borders or screens.

12-18 in., 10 for \$1.75; 25 for \$ 3.65; 100 for \$12.50
18-24 in., 10 for \$2.25; 25 for \$ 5.00; 100 for \$18.00
3-4 ft., 10 for \$5.95; 25 for \$13.75; 100 for \$53.00

ROSA MULTIFLORA

A Beautiful—A Practical—An Economical Fence or Border
See page 3 for description and prices
6 to 12 inch size as low as 3c each in lots of 100



FRENCH HYBRID LILACS

Spring Hill's varieties are free flowering with richest colors and exquisite fragrance. Unexcelled for beautiful, long-lasting bouquets. All are giant flowering, grafted hybrids that will bloom 1st or 2nd year.

BELLE DE NANCY—9S18—Huge, double, satiny-rose-pink.

MADAM ABEL CHATNEY—9S19—Big, double white.

LUDWIG SPAETH—9S20—Fragrant dark red.

CHAS. X.—9S21—Popular deep rose-red.

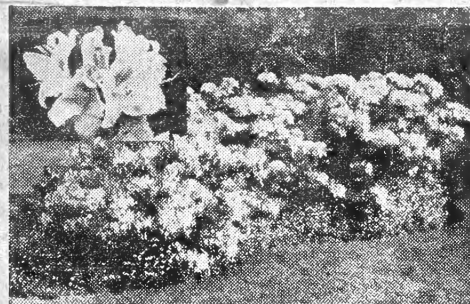
ALPHONSE LA VALLE—9S22—Double, vivid purple.

PRES. GREVY—9S23—Fragrant, clear blue.

Choice of above French lilacs, 2 yr. 24 inch size, 90c each; 3 for \$2.50. 3 yr., 36 inch size, \$1.35 each; 3 for \$3.85. 3 yr., 4 ft. size, \$1.60 each; 3 for \$4.55.

3 for \$1.19

PERSIAN LILAC—9S25—(Rothomagensis) More dwarf growing with vivid lilac-rose flowers so abundant they smother plants for weeks each spring. 2 yr., 12 to 18 inch, 38c each; 3 for \$1.00. 3 yr., 3 to 4 ft., 75c each; 3 for \$1.98.



HARDY AZALEA MOLLIS

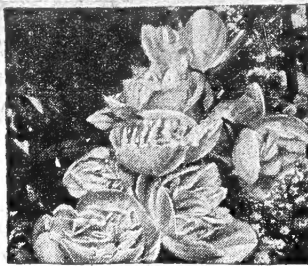
(Imported large flowering strain) This hardiest of Azaleas has brilliant, frilled flowers in striking colors of scarlet to salmon-red. Spring Hills select imported Holland strain blooms so profusely the compact plants are completely covered with blooms for many weeks each spring. All azaleas wrapped in acid peat. Plants will bloom for you this spring. Blooming size plants about 1 ft. tall, 6 to 10 canes.

9A12—Orange shades.
9A13—Red shades.
9A14—Rosy-pink shades.

Choice of above colors.

\$1.89 each; 2 for \$3.60

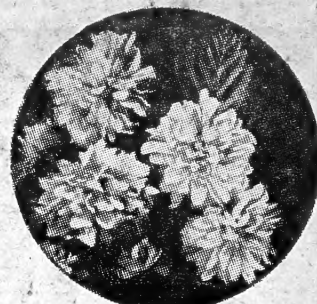
AZALEAS Smaller Size—9A15—About 10 inches, 4 to 6 canes, will bloom this year. Red shades only. 98c each; 2 for \$1.85; 10 for \$8.95.



Double Mock Orange

9S16—(Philadelphus Virginal) Big, everblooming, double, thick, waxy, white blooms from early spring continuously till fall. Neat, semi-dwarf shrubs growing 6 ft. tall. Easy to grow, hardy shrubs. 2 yr., 12 to 18 inch, 49c each; 3 for \$1.35. 3 yr., 90c each; 3 for \$2.50.

3 for \$1.35



Double Kerria Japonica

9S17—Fluffy, golden, ball-shaped blooms in profusion during May and June, scattered blooms all summer. Excellent to cut for bouquets. Attractive plants grow 4 to 5 ft. tall. 2 yr. 12 to 18 inch size, 45c each; 3 for \$1.15. 3 yr., 2 to 3 ft. size.

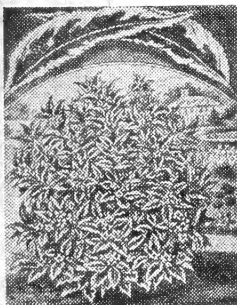
3 for \$1.15

Everblooming Red, White and Blue Shrub Collection 9SG37

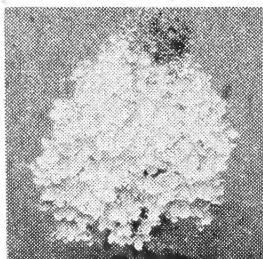
1 Dwarf Spirea A. W., 2 yr. 12 to 15 in. \$.50 ea.
1 Philadelphus Virginal, 1 ft. .55 ea.
1 Blue Mist Spirea, 12 to 18 in. .60 ea.

Catalog Value \$1.65

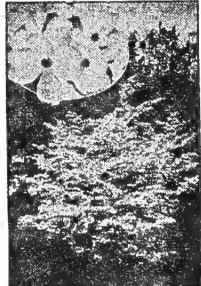
One each, all 3 for \$1.25



SILVERLEAF DOGWOOD—9S26—(Cornus Elegantiissima) Beautiful leaves a mixture of silvery-white and green with irregular margin of creamy-white. Excellent for color contrasts. True grafted strain. 2 yr., 12 to 18 inch, 60c each; 3 for \$1.65. 2 yr. 2 ft. size, \$1.00 each; 3 for \$2.75.



Hydrangea paniculata grandiflora 9S27—Famous, giant P. G. Hydrangea. Massive, snowy-white flowers through August that change to rose-pink and last for weeks. Winter-hardy and vigorous growing. Prune back each year for largest blooms, often over 12 inches long. Good. 2 yr. 12 to 15 in., 38c each, 3 for 98c. Better, 2 yr. 18 to 24 in., 70c each; 3 for \$1.95. Best, 3 yr. 2 to 3 ft., 85c each; 3 for \$2.25.



PINK FLOWERING DOGWOOD—9S28—(Cornus Florida Rubra) A magnificent sight when blooming. Big, rose-red blooms in early spring fill the dwarf, round headed trees. New low prices. Grafted 1 ft. size, \$1.15 each; 3 for \$3.25. 2 to 3 ft. size, \$2.95 each. 3 to 4 ft. size, \$4.50 each. (White flowering dogwood see opposite)

BLUE SPIREA 9S29—(Caryopteris Clamodensis) Low, mound-like plants are smothered with misty-9 to 12 inch, 37c each; 3 for 85c. 12 to 18 inch, 60c each; 3 for \$1.60.

SPIREA VAN HOUTTEI—9S30—(Bridalwreath) The famous all purpose dependable shrub. Hedging size see above. 12 to 18 inch, 3 for 79c; 6 for \$1.45. 2 to 3 ft., 65c each; 3 for \$1.75.

HYDRANGEA NIKKO BLUE—9S31—Giant blooms like Hills of Snow in size and shape but flowers are deep blue. Advise winter protection North of Ohio River. 2 yr. 12 to 15 inch 90c each; 3 for \$2.55. 3 yrs., 15 to 18 inch, \$1.15 each; 3 for \$3.25.

HYDRANGEA HILLS OF SNOW—9S32—(Arborescens Grandiflora) Huge, double, white blooms for many weeks through June and July. 2 yr., 12 to 15 inch, 45c each; 3 for \$1.15. 3 yr., 2 to 3 ft., 85c each; 3 for \$2.25.

DEUTZIA PRIDE OF ROCHESTER—9S33—Large, double white flowers with pink fringe. Exceeds all deutzia in profusion of blooms, size of flowers and hardiness. Highly prized. 12 to 18 inch size, 35c each; 3 for 89c; 2 to 3 ft. size 65c each; 3 for \$1.75.

FORSYTHIA SPECTABILIS—9S34—(Golden Bell) Giant flowering golden bell. A greatly improved variety for abundance of blooms with deep richer golden color. 2 yr. 1 1/2 to 2 ft. size 2 for 51c. 3 yr., 3 ft. size, 70c each; 3 for \$1.85.

PINK FLOWERING ALMOND—9S35—(Prunus glandulosa) Beautiful, compact 3 ft. plants are smothered in early spring with large, double, rose-pink blooms. Own root plants. 2 yr., 12 to 18 inch size, 48c each; 3 for \$1.25. 3 yr. 2 to 3 ft. size, 75c each; 3 for \$1.95.

ROSE WEIGELIA—9S36—(Abel Carreri) Lovely clusters of big pink tubular shaped flowers in great profusion in spring with scattering blooms all summer. 2 yr. 12 to 18 inch, 37c each; 3 for 75c. 3 yr., 2 to 3 ft., 70c each; 3 for \$1.95.

WHITE FLOWERING DOGWOOD—9S36—(Cornus Florida) A fine native small tree of great beauty, charm and popularity. Extremely hardy, sturdy and free flowering in spring when the trees are a magnificent sight. 2 ft. size 50c each; 3 for \$1.25. 2 to 3 ft., \$1.35 each; 3 for \$3.75. 3 to 4 ft., \$1.75 each; 3 for \$4.95.

CHRYSANTHEMUMS



Expertly chosen large, hardy exhibition chrysanthemums

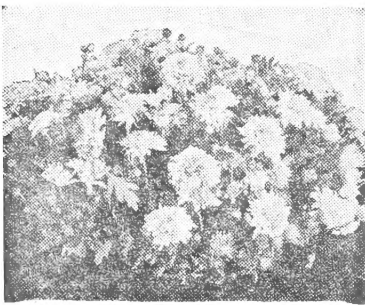
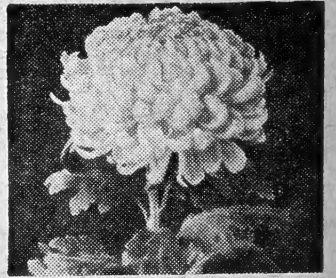
SURPRISE COLOR COLLECTION

10C1—Here at Tipp City we produce over a half million chrysanthemums each year. Hundreds of the best new varieties, acres of plants, millions of blooms. We offer only the better recommended, cut-flower varieties. All are guaranteed hardy, large, double, early and profuse blooming. One each of following colors, 5 for \$1.15. All big, sturdy, pot plants that will bloom this fall.

- Exhibition Red.
- Exhibition White.
- Exhibition Yellow.

- Exhibition Bronze.
- Exhibition Pink.

One
Each Color
5 for
\$1.15



NEW LILLIPUTIAN MUMS

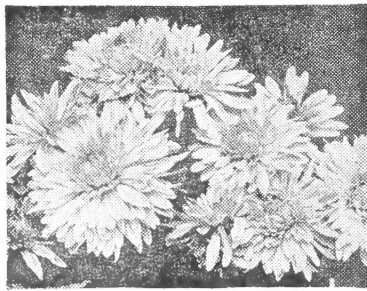
An entirely new section of hardy chrysanthemum. More dwarf than anything yet seen. Nice, round, symmetrical plants grow only 10 to 15 inches tall. Extremely free flowering, often up to 500 blooms per plant. All varieties have won Royal Horticulture Society Medal and most varieties have won additional honors.

- DOC—10C2—Large, double, rose pink.
- EMU—10C3—Medium size, deep rosy-purple.
- HAPPY—10C4—Big, brilliant yellow.
- PHEASANT—10C5—Red anemone.

Choice of above 4 varieties, 65¢ each; 3 for \$1.75.

LILLIPUTIAN MUM GARDEN

10CG6—Garden of 4, one each variety listed (labeled), 4 for \$2.35.



UNIVERSITY OF MINNESOTA

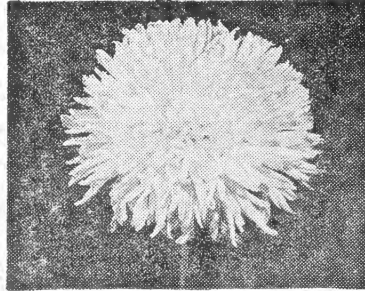
Extra-early flowering, winter hardy, double blooming varieties hybridized by Dr. Longley. The following are low-growing and compact plants. Tall enough for bouquets.

- MAROON N' GOLD—10C7—Huge, coppery-orange.
- GLACIER—10C8—Beautiful big white.
- BUTTERBALL—10C9—Rich, buttery-yellow.
- VIOLET—10C10—Vivid, rich, royal purple.
- DR. LONGLEY—10C11—Huge glowing pink.

Choice of 5 Univ. of Minnesota Mums, 45¢ each; 3 for \$1.20; 10 for \$3.75.

University Minnesota Mum Garden

10CG12—One each above 5 varieties (unlabeled) 5 for \$1.89.



New Cactus—Flowered Chrysanthemums

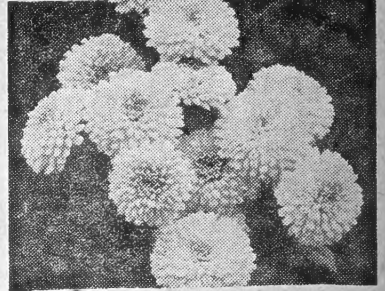
Long, rolled, pointed petals on double blooms that resemble giant, cactus-dahlia flowers, often 5 inches in diameter. Hardy, strong growing, profuse flowering plants with new colors unexcelled for cutting.

- CACTUS GOLD—10C13—Soft yellow blooms.
- DAHLIA MUM—10C14—Rich mulberry-red.
- CAPTAIN JOHN SMITH—10C15—Rose-pink blooms.
- CACTUS WHITE—10C16—Large white flowers.
- LORENZO—10C17—New, rich warm purple.
- QUILLED CUSHION—10C18—Blazing, oriental-red that ages to bronze.

Choice of above 6 quilled chrysanthemums, 45¢ each; 2 for 80¢; 12 for \$4.50.

CACTUS-FLOWERED MUM GARDEN

10CG19—One each above varieties (unlabeled) 6 for \$2.25.



HARDY BUTTON MUMS

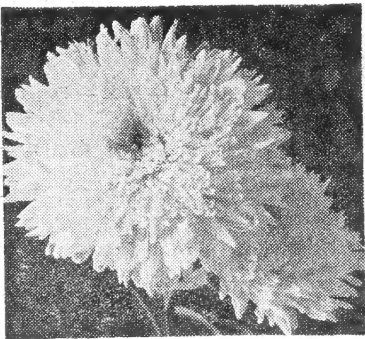
Small, tight, perfectly formed, double flowers in clusters make colorful garden plants and blooms are popular for cutting. Each variety has been chosen as one of the best of its color.

- RUBY POMPON—10C20—Glowing red.
- CHIQUITA—10C21—Vivid yellow.
- LITTLE ESKIMO—10C22—Pure white.
- ROSITA—10C23—Perfect Persian rose.
- FIESTA—10C24—Brilliant orange.

Choice of above hardy button mums, 38¢ each; 3 for \$1.00; 10 for \$3.15.

BUTTON MUM GARDEN SPECIAL

10C25—One each 5 colors listed (labeled). 5 for \$1.55.



LARGE, EXHIBITION, CHRYSANTHEMUMS

BETTY—10C26—Lovely salmon-pink. 42c each; 3 for \$1.10.

LAVENDER LADY—10C27—Huge lavender. 36c each; 3 for 95c.

ANN—10C28—Immense, double white. 45c each; 3 for \$1.20.

COURAGEOUS—10C29—Bright crimson. 50c each; 3 for \$1.35.

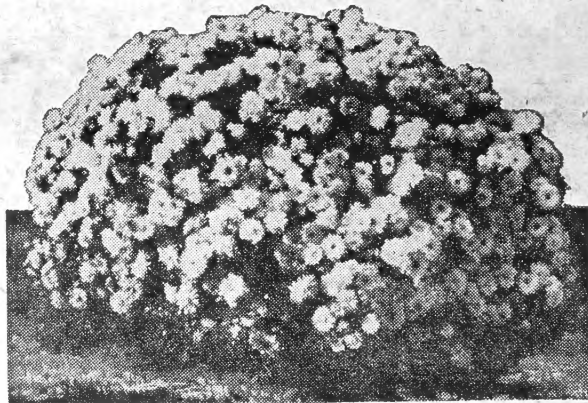
RED VELVET—10C30—A favorite big red. 45c each; 3 for \$1.25.

CHAS. NYE—10C31—Extra large, vivid yellow. 45c each; 3 for \$1.20.

GOLDBLOCKS—10C32—Intense yellow, long blooming. 36c each; 3 for 95c.

CARNIVAL—10C33—Our favorite fiery orange. 45c each; 3 for \$1.20.

OLIVE LONGLAND—10C34—Orange, gold, salmon. 36c each; 3 for 95c.



OUR BEST HARDY VARIETY CUSHION CHRYSANTHEMUMS

Amazing new, early blooming, free flowering, dwarf mound-shaped plants as pictured. Hundreds of blooms this fall. Varieties listed are the most popular and best recommended.

- REDWOOD (Cushion)—10C35—Big, double blooms of brightest crimson. 45¢ each; 3 for \$1.20.
- HOLLY MUM (Cushion)—10C36—Brightest clear yellow, double blooms. 45¢ each; 3 for \$1.20.
- MAJOR (Cushion)—10C37—Beautiful, double, clear rose-pink blooms. 40¢ each; 3 for \$1.10.
- PRINCE—(Cushion)—10C38—Beautiful, extra large, double flowers of apricot-buff. 40¢ each; 3 for \$1.10.
- NANOOK (Cushion)—10C39—Large, double, crispy white blooms. 45¢ each; 3 for \$1.20.
- CODY (Cushion)—10C40—New, exquisite, bright lavender with pink. 55¢ each; 3 for \$1.40.
- RED CLOUD (Cushion)—10C41—Large, double, bright velvety-scarlet blooms. 50¢ each; 3 for \$1.35.
- COCHECO (Cushion)—10C42—Double blooms of bright purple. 45¢ each; 3 for \$1.20.

CUSHION MUM SPECIAL

10CS43—One each Pink, Red, Yellow and White. Fully guaranteed. Improved, early free flowering, hardy strains that will bloom for you this year. (unlabeled) 4 for \$1.15.

CUSHION MUM COLOR SPECIAL

10CS44—Choice of Pink, Yellow, Red, White 38¢ each; 3 for \$1.00.



HARDY SPOON CHRYSANTHEMUMS

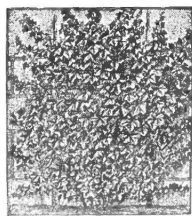
Long, tubular petals like miniature spoons. Big blooms fully 3 to 4 inches across are beautiful and novel. Spring Hill's new, hardy varieties are early blooming, vigorous growing with great profusion of flowers from the middle of September through November. Lovely for bouquets.

- LOVELINESS SPOON—10C45—Big, thickly petaled blooms of bright carmine-pink.
- MAGENTA SPOON—10C46—Beautiful rosy-violet spoons with silver tubes.
- IVORY SPOON—10C47—Great profusion of dainty, clear white blooms; gold centers.
- CARDINAL SPOON—10C48—Big, 4 inch blooms cardinal-red with straw yellow tubes.
- CANARY SPOON—10C49—Clear bright yellow blooms in great profusion.

Choice of above hardy spoon chrysanthemums, 45c each; 3 for \$1.20; 10 for \$3.75.

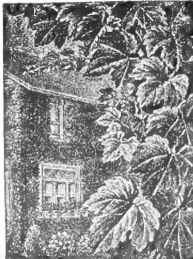
Hardy Spoon Mum Garden Special

10C65—One each above 5 varieties each labeled. 5 for \$1.85.



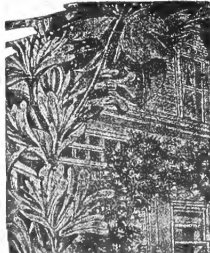
EVERGREEN CLINGING WALL VINE—10V51—(Euonymus colorata) Climbs brick or concrete walls without support. Green winter and summer, fast growing. Pot size, 39c each; 3 for \$1.00. 2 yr., 65c each; 3 for \$1.75.

3 for \$1.75



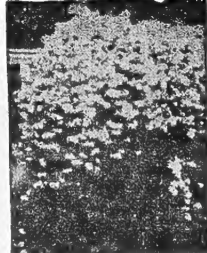
BOSTON IVY—10V52—(Ampelopsis Tricuspidata) Clings to stone, brick or concrete, fast growing. Pot plants, 55c each; 3 for \$1.45. 2 yr., 89c each; 3 for \$2.20.

3 for \$2.20



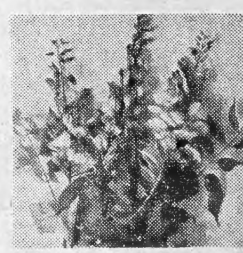
SILVER LACE VINE—10V53—(Polygonum Auberti) Grows up to 20 ft. first summer and is covered with white flowers; very hardy. 2 yr. No. 1, 69c each; 3 for \$1.90.

3 for \$1.90



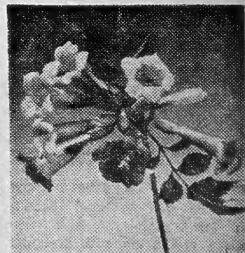
HONEYSUCKLE VINE—10V54—Beautiful, creamy-white, fragrant blooms; foliage green winter and summer. 2 yr., 39c each; 3 for \$1.00; 25 for \$6.25. 3 yr. 48c each; 3 for \$1.25.

3 for \$1.25



WISTERIA ROYAL PURPLE—10V55—Grafted, guaranteed to bloom vine, with magnificent flower clusters often over a foot long. 2 yr. medium, 70c each; 3 for \$1.79. 2 yr. No. 1, \$1.10 each; 3 for \$2.95.

3 for \$2.95



ORANGE CRIMSON TRUMPET VINE—10V56—(Bignonia) Rapid growing hardy climbing vines. Extra large flowers in abundance for many weeks in summer. 2 yr., 39c each; 3 for \$1.00. 3 yr., 69c each; 3 for \$1.90.

3 for \$1.90

SAVE at these New **LOW PRICES** *Beautiful Hardy Flowers* ...**GROW EACH YEAR WITHOUT REPLANTING**

PLANT NOW For beautiful blooms this Summer and many more years.



PAINTED DAISIES

11P1 — (Pyrethrum) Bright red and glowing pink flowers for many weeks each spring. 2 yr., 27c each;

3 for 65c.



BASKETS OF GOLD

11P2—(Alyssum) Beautiful intense yellow flowers completely hide low, round plants in spring. Hardy. 27c each;

3 for 65c.



KAEMPFERI IRIS

11P3—Aristocratic giants often large as dinner plates. Longest blooming iris. Assorted colors. 40c each;

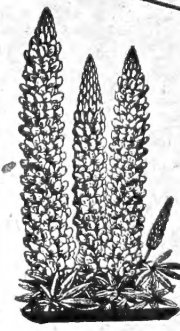
3 for 99c.



GAILLARDIA THE DAZZLER

11P4 — Profusion of big crimson-gold and orange flowers June through November. 29c each;

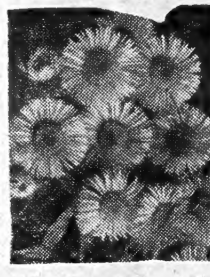
3 for 75c.



FAMOUS RUSSELL LUPINES

11P5 — Amazingly brilliant pastel colors. Extra large flowers in great profusion. Big, 2 yr. size, 33c each;

3 for 85c.



Blue Fringed Daisy

11P6 — (Erigeron) Clusters of beautiful azure-blue flowers throughout each summer; fine for cutting. 33c each;

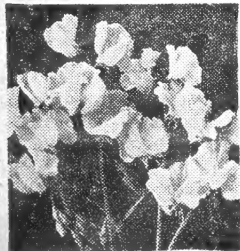
3 for 79c.



CRIMSON KING CARNATION

11P7—Withstands zero temperatures. Beautiful big, double, striking crimson-red flowers from early summer till fall. For abundance of big blooms plant in rich soil. True cutting-grown plants. 38c each;

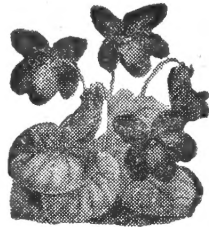
3 for \$1.00.



HARDY SWEET PEAS

11P8—Beautiful large, fragrant flowers throughout summer. Climbing vines grow each year. Assorted colors. 27c each;

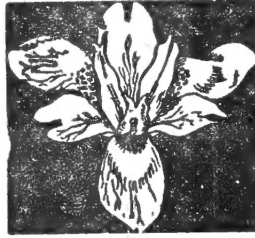
3 for 65c.



HARDY VIOLET PRINCE OF WALES

11P9—One of the largest, most sweetly fragrant richly colored violets. Bloom spring and fall.

2 for 56c.



VESPER IRIS

11P10—Hundreds of jewel-like flowers during July and August. Long blooming beautiful bouquets. 29c each;

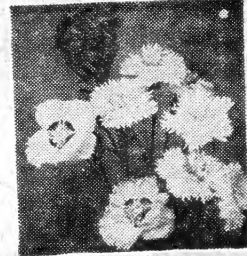
3 for 75c.



HARDY VERBENA

11P11—Low growing, spreading plants flower continuously from late May till winter. Unusual and beautiful. 39c each;

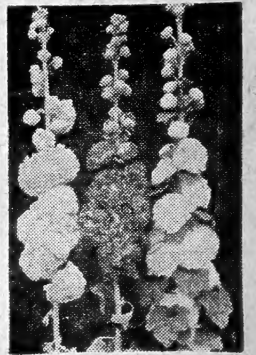
3 for \$1.00.



DOUBLE PINKS

11P12—(Fragrant highland hybrids). Exquisite pink and crimson, fragrant blooms in abundance. Select strain. 29c each;

3 for 75c.

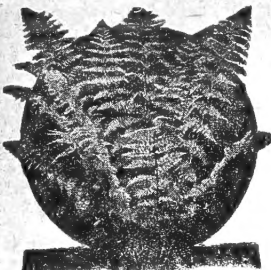


DOUBLE TRIUMPH HOLLYHOCKS

11P13—New, colorful hybrids in all shades of pink, red, yellow and orange. Big plants, 2 for 35c;

4 for 65c.

BEST OUTDOOR FERNS



Hardy plants with large decorative foliage for bouquets and garden beauty. Plant 10 inches apart in moist, sandy location. All plants big 3 yr. clumps.

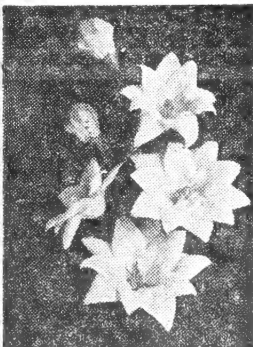
OSTRICH—11P14—Graceful, tall growing. 36¢ each; 3 for 95¢; 6 for \$1.69; 12 for \$3.15.

CINNAMON—11P15—Strikingly handsome. 38¢ each; 3 for \$1.00; 6 for \$1.79; 12 for \$3.35.

CHRISTMAS—11P16—Hardy, evergreen species. 45¢ each; 3 for \$1.20; 6 for \$2.15.

HARDY GARDEN PLATYCODON

Big, balloon-shaped buds that open into perfect stars of waxlike flowers. Blooms for many weeks through summer. Winter hardy and easy to grow.



SHELL PINK—11P17—35c each; 3 for 90c.

DOUBLE BLUE—11P18—42c each; 3 for \$1.10.

DOUBLE WHITE—11P19—55c each; 3 for \$1.50.

DWARF BLUE—11P20—35c each; 3 for 90c.

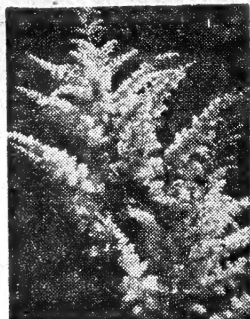
PLATYCODON GARDEN SPECIAL 11P21

1 Shell Pink.....\$.35
1 Double White......55
1 Double Blue......42
1 Dwarf Blue......35

Catalog value.....1.67

Blooming size plants. One each unlabeled.

All 4 for \$1.29



ASTILBE

Perennial Spirea—Profusion of beautiful and graceful flowers through June and July. Very hardy, prefer moist, rich soil.

FANAL—11P22—Striking crimson.

PEACH BLOSSOM—11P23—Brilliant pink.

DEUTSCHLAND—11P24—Best white.

Choice of above varieties, 55c each; 6 for \$2.40.

ASTILBE GARDEN SPECIAL

11P25—One each varieties (unlabeled). Regular \$1.65 catalog value.

3 for \$1.25

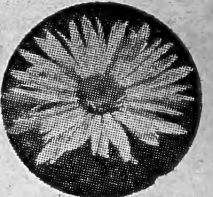
SHASTA DAISIES

MAY QUEEN—11P30—(Shasta Daisy) Earliest blooming, large, cut-flower variety. New, imported strain from Holland, with hundreds of white blooms in May and June. 27c each; 3 for 65c; 6 for \$1.15.

PINK SHASTA DAISY—11P31—(Clara Curtis) Lovely, clear, salmon-pink flowers from early August through September in great profusion. Hardy, easy to grow. Free flowering. 33c each; 3 for 79c; 6 for \$1.50.

DIENER'S DOUBLE DAISY—11P32—(Shasta Daisy) Nearly double, like China aster, with fringed, fluffy petals. Excellent for bouquets. Best of all double Shastas. Hardy, vigorous, and free flowering. 35c each; 3 for 90c; 6 for \$1.70.

SHASTA DAISY CONQUEROR—11P33—Immense white flowers, yellow centers, in great profusion. Excellent, long lasting bouquets. 2 yr., 30c each; Sale price 2 for 31c.



BABY'S BREATH

SINGLE WHITE (Paniculata) 11P34—Tall growing, misty white blooms for cutting. 24¢ each; 3 for 69¢.

NEW PINK (Oldhamiana) 11P35—Hardy, free blooming for 2 or 3 months, dainty pink flowers. 36¢ each; 3 for 90¢.

DOUBLE WHITE (Grafted Bristol Fairy) 11P36—Flowers throughout the summer. The best and most beautiful for cutting. 59¢ each; 3 for \$1.65.

DOUBLE PINK (Grafted Rosy Veil)—11P37—Dwarf, round 2 ft. plants smothered with charming clear pink blooms spring and fall. 50¢ each; 3 for \$1.35.



HARDY HYBRID DELPHINIUM

PACIFIC HYBRIDS—11P26—Considered the finest hybrid in existence. Magnificent, tall, long, lasting exhibition flower spikes of harmonious colors of blue, violet and lavender. 37¢ each; 3 for 98¢.

BELLADONNA—11P27—Plants are easier to grow, hardier and produce more blooms than the popular hybrids. Low growing (3 to 4 ft.) especially nice for bouquets. 29¢ each; 3 for 75¢; 12 for \$2.65.

BELLAMOSA—11P28—Identical in every way to Belladonna except the blooms are a deep rich blue. 29¢ each; 3 for 75¢; 12 for \$2.65.

BELLADONNA AND BELLAMOSA DELPHINIUM GARDEN

11P29—Two each of Belladonna and two Bellamosa delphiniums (not labeled).

4 for 89c.

AT A **BIG SAVING**

DWARF HARDY ASTERS

Hundreds of blooms for weeks each fall.

NIOBE—11P38—Lovely clear white.

LILAC TIME—11P39—Clear, soft lilac.

COUNTESS OF DUDLEY—11P40—Vivid lilac-pink.

LITTLE RED BOY—11P41—Bright China rose.

Choice of above dwarf asters, 40c each; 3 for \$1.00; 10 for \$2.98.

TALL, HARDY ASTERS

Free blooming, excellent for cutting, grows 3 to 4 ft. tall.

PALMYRA—11P43—Fine, glowing pink.

MT. EVEREST—11P44—Rated best white.

VIOLETTA—11P45—Richest violet blue.

DWARF ASTER SPECIAL

11A62—One each above 4 dwarf asters 4 for \$1.15.

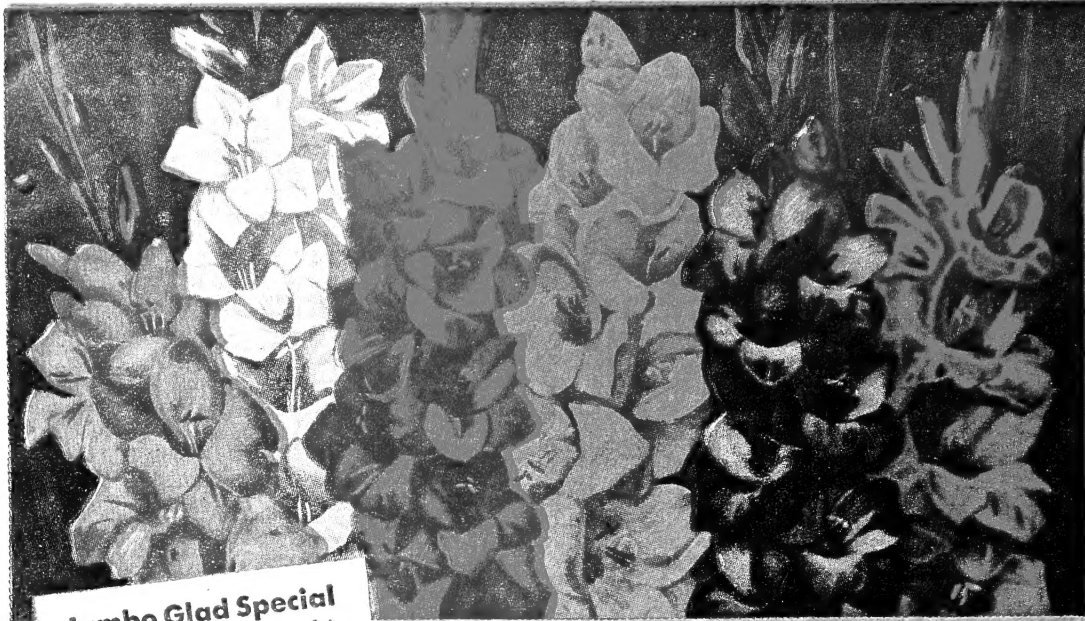
TALL ASTER SPECIAL

11A67—One each above 4 tall asters. 4 for \$1.15.



Spring Hill **NURSERIES**
EST. 1849

GUARANTEED PLANTS Buy With Confidence



Jumbo Glad Special

1265—One each, maroon, scarlet, red, white, pink, cream, yellow, orange, lavender, blue, purple, and orchid. Unlabeled, 12 different colors plus 2 sweet-scented Murielae glads. \$1.23 regular catalog value.
14 No. 1 bulbs 89c

Spring Hill's RAINBOW GLAD Bargain

1264—Guaranteed hand-made mixture of over 20 named varieties give you well balanced array of red, pink, white, yellow, blue, lavender and smoky. No inferior seedlings or primis included. Special low price because bulbs are smaller and sold in mixture only. Bulbs about size of 25c piece, some much larger. Guaranteed to produce large blooms this summer.

No. 3 blooming size.

30 for 98c

100 for \$2.45

GLADIOLUS Color Special

1261—Giant gladiolus in radiant colors. Choice of the six colors pictured, all giant No. 1 bulbs that are guaranteed to produce the earliest and largest exhibition blooms. Spring Hill's selection from best cut flower, prize winning varieties. Your choice of smoky, white, red, yellow, violet, and pink.

6 as pictured, one ea. unlabeled **6 for 39c**
 12 as pictured, two ea. unlabeled **12 for 70c**
 18 as pictured, three ea. unlabeled **18 for 99c**
 24 as pictured, four ea. unlabeled **24 for 1.20**

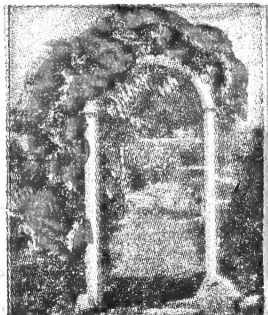
1262—LABELED BULBS—3 of a color 20c—6 of a color 35c—12 of a color 65c—25 of a color \$1.20.

INTERNATIONAL GLADS

1263—Collection of 29 different colors described in general catalog. Wonderful display of the world's most gorgeous colored glads at big savings.

One each of the 29 glads listed plus 3 Murielae (Sweet Scented Glads). Regular \$3.77 catalog value—Save 47%.

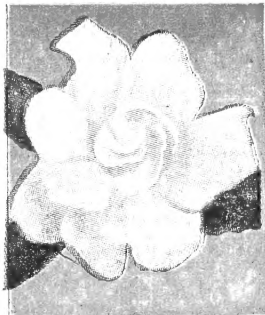
32 Jumbo No. 1 bulbs for \$1.99



CLIMBING ROSE

12CR6—PAUL'S SCARLET—America's favorite, most colorful rose. Large, scarlet flowers in profusion for long time. See page 6-7 for other sizes. 2 yr. No. 1, 3 for \$2.20.

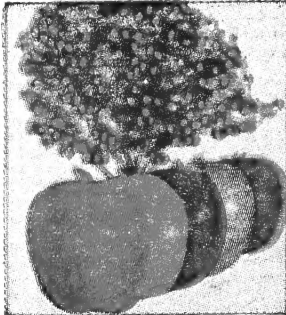
79c each



WHITE GARDENIA

12G9—Fragrant, most ever-blooming and free flowering gardenia. Exquisite flowers and fragrance. 8 to 12 inch, 49c each; 3 for \$1.25; 12 to 15 in., \$1.50 each.

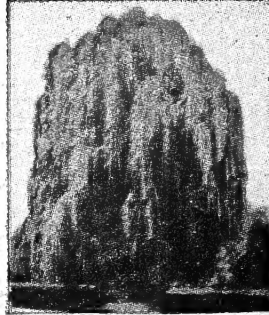
49c each



FIVE-N-ONE APPLE

12A7—Apples all season—five different varieties. Early, mid-season and winter apples scientifically grafted on same tree. 3 yr., 4 to 5 ft., 3 for \$7.95.

\$2.75 each



WEeping WILLOW

12T8—Extra fast growing handsome trees. Guaranteed finest weeping strain at record low prices. 5 to 6 ft. \$1.75 each.

2 for \$1.76



Other strawberries, see page 4

STRAWBERRIES

12S10—SENATOR DUNLAP—Has out-sold other varieties for over fifty years. Favorite for home and commercial plantings. You can depend on big crops in all types of soil and in every state. Big, bright red, smooth fruits of perfect shape, superb quality. Excellent for freezing, jellies, and eating fresh. Guaranteed 1st class plants at lowest prices.

25 for 75c • 50 for \$1.25 • 200 for \$3.20
 500 for \$6.85 • 1000 for \$11.75

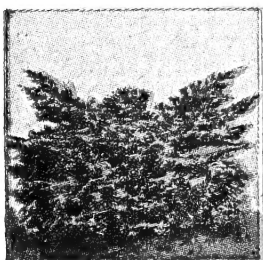
100 for \$1.69



Spring Hill's BARGAIN CATALOG

WITH A FREE GIFT FOR YOU

FREE One hardy flowering size Deutzia Pride of Rochester free to each family that visits the nursery this spring. Offer can be changed without notice, but a shrub of equal value will be given free. For those who mail an order, ask for a FREE Deutzia. Will not be mailed unless you mention it on your order.



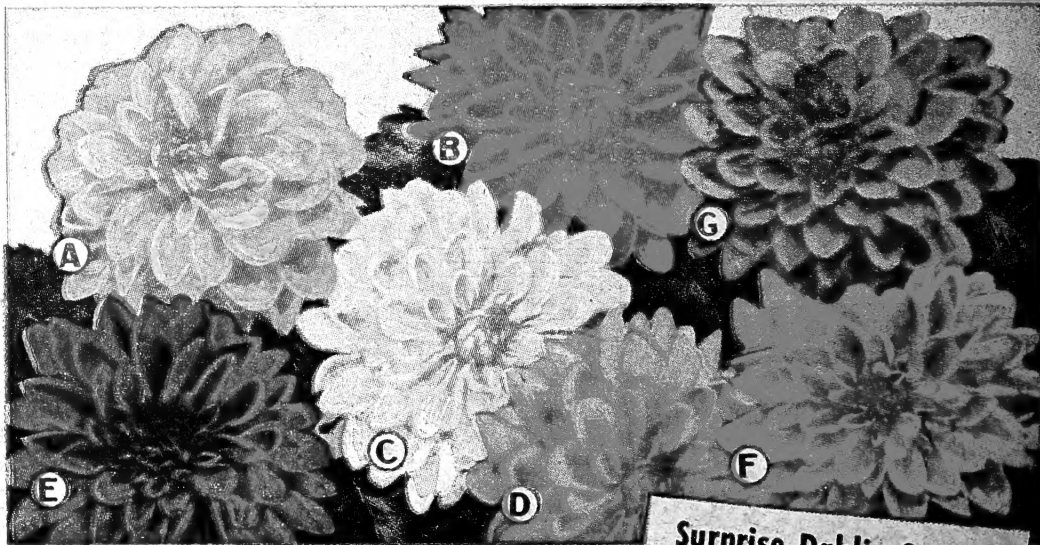
BLUE PFITSERIANA

12E11—NEW BLUE JUNIPER—Beautiful silvery blue foliage. Rapid spreading evergreen, excellent for landscaping. New variety. 5 yr., 8 to 12 in., \$1.25 ea. 2 for \$2.35; 6 for \$6.90. 18 in., \$2.00 ea.; matched pair, 2 for \$3.65; 6 for \$10.20.



BLACK RASPBERRY

12R12—NEW LOGAN. Highest yielding, early fruiting commercial and home variety. Disease resistant, superb quality and size. Highly recommended. Top grade tips, 5 for 75c; 10 for \$1.25; 25 for \$2.25; 100 for \$7.50; 1000 for \$42.50.



GIANT DAHLIAS

New low prices. Champion monarchs of the flower world. Guaranteed continuous and free blooming varieties easily grown, beautifully colored.

A California Idol—12D13—Bright, yellow.
 B Mrs. Geo. Le Boutillier—12D14—Crimson.
 C White Wonder—12D15—Fluffy, pure white.
 D Pres. Wm. Taft—12D16—Rich begonia-rose.
 E Royal Pennant—12D17—Fine rich purple.
 F King of Commerce—12D18—Bronze-gold.
 G Lavender Delight—12D19—Pale lavender.

Choice of varieties listed A, B, C, D, E, F, G

40c each

3 for \$1.10

Surprise Dahlia Special

12D21—Giant flowering. Guaranteed Satisfaction. Strictly No. 1 hand cut roots. Finest assortment of large flowering types. Cactus, peony, show and decorative in assorted colors. Over 100 leading varieties. Big savings for those who want abundance of beautiful blooms and care little for names of varieties.

2 for 55c
 4 for 95c **10 for \$1.98**

SPRING HILL

Nurseries

102nd Anniversary



TIPP CITY, OHIO

SPECIAL DAHLIA GARDEN—12DG20—

Collection of 7 giants as pictured—A, B, C, D, E, F, G, unlabeled.

7 for \$2.55